

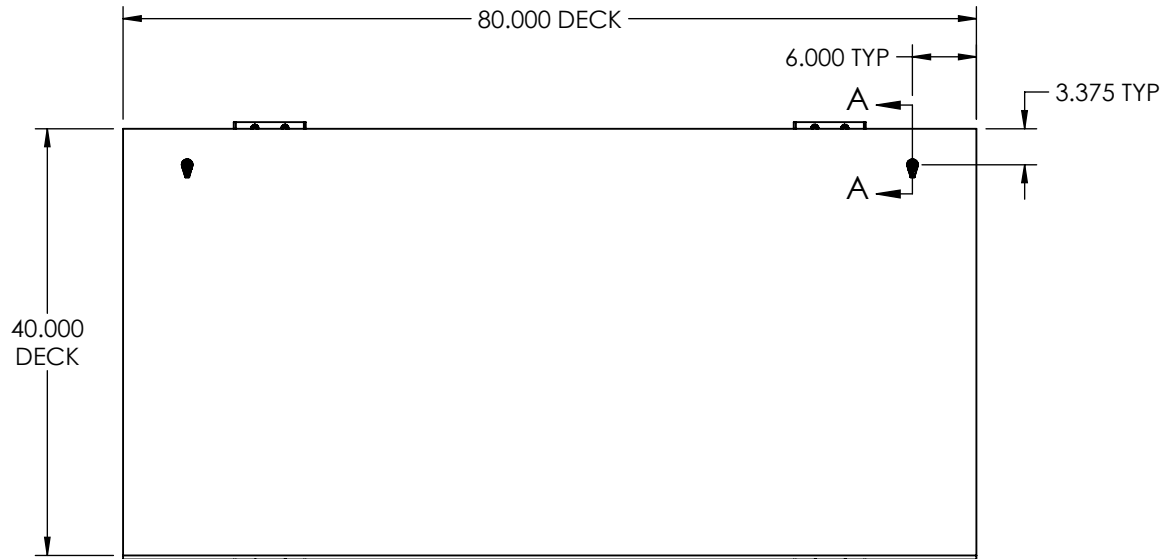
Model: Custom Scissor Lift w/Tilt Deck
Capacity: 1,700 Pounds
Raised Height: 45"
Lowered Height: 27"
Travel: 18"
Deck: 40" x 80" Welded Steel Deck w/30° Tilt & 2x Hook Clamps
Base: Welded Steel Frame Scissor Lift. **Features 4x Each Ø5" Poly on Iron Swivel Casters w/Top Lock Brakes**, 1x Foot Actuated Floor Brake
Power: 120V AC Electric Over Hydraulic Motor with Electrical Enclosure & Receptacle
Controls: 2x Guarded Dual Foot Switches – Raise/Lower, Tilt Up/Tilt Down
Paint: Lange Lift Shadow Gray

RETURN SIGNED APPROVAL DRAWING TO LANGE LIFT BY E-MAIL. LEAD TIMES ARE SUBJECT TO THE RECEIPT OF THE SIGNED APPROVAL DRAWING, AND PO, FOR ALL CUSTOM AND MODIFIED PRODUCTS.

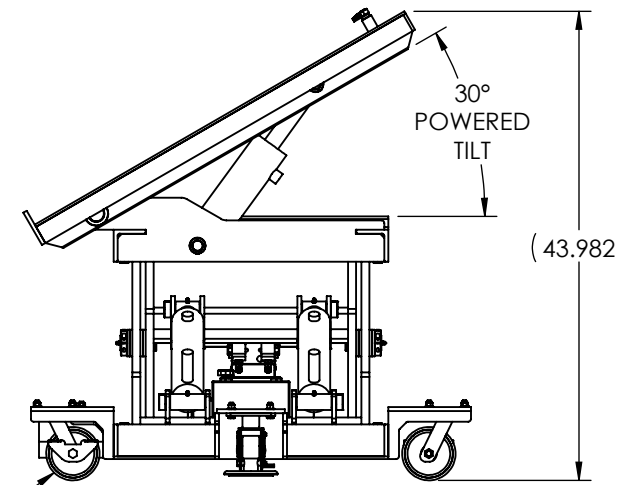
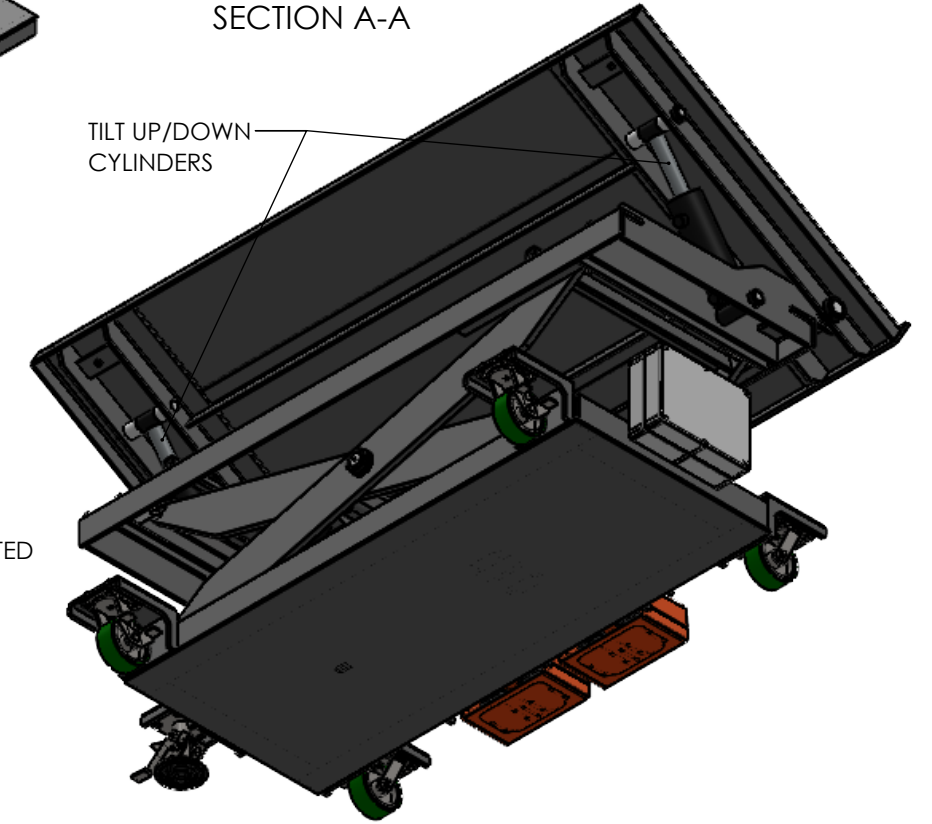
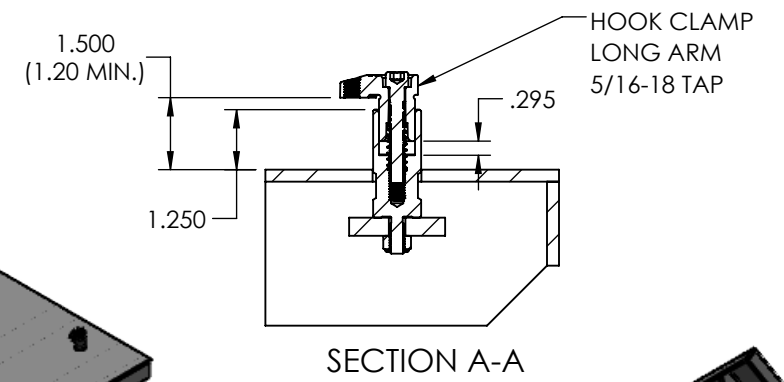
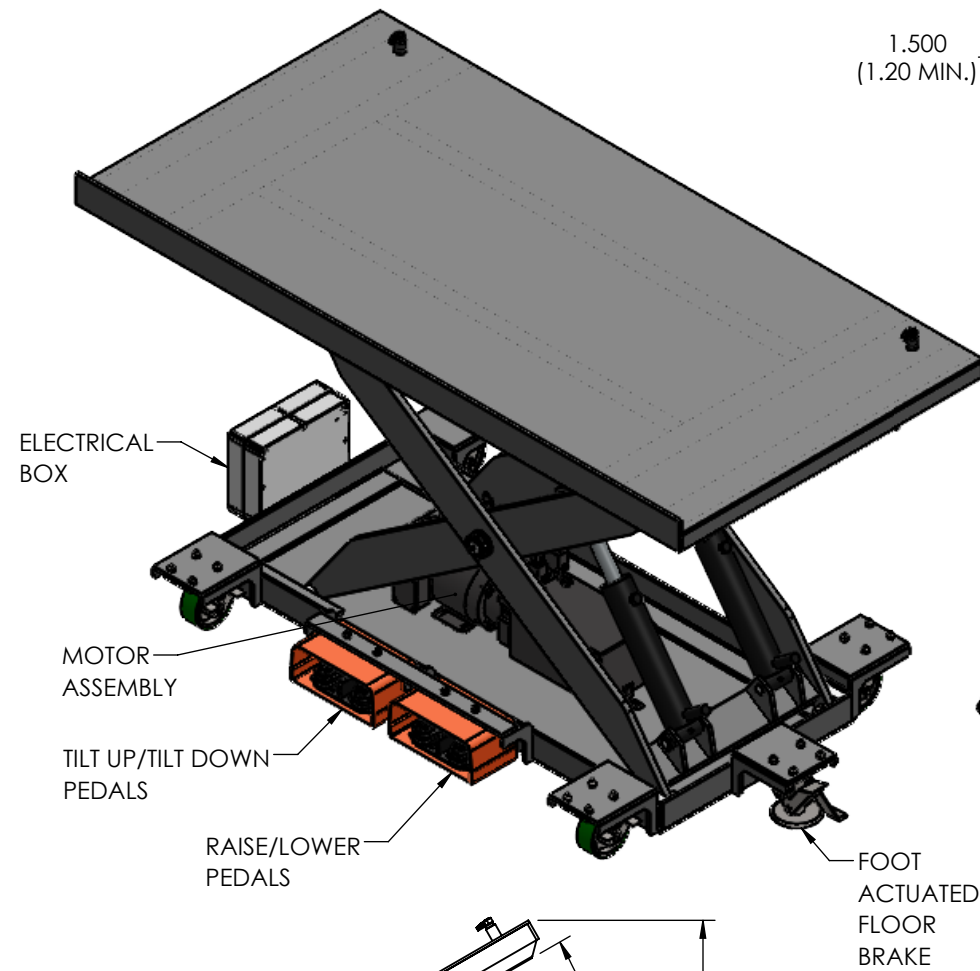
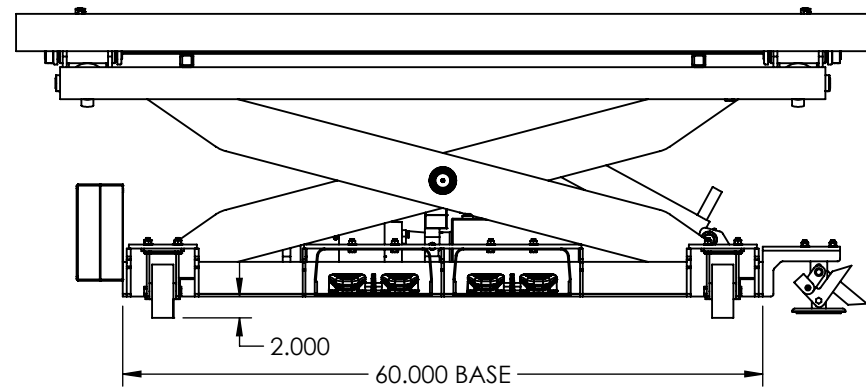
APPROVED FOR PRODUCTION

PRINT NAME:	DATE:
APPROVAL SIGNATURE:	

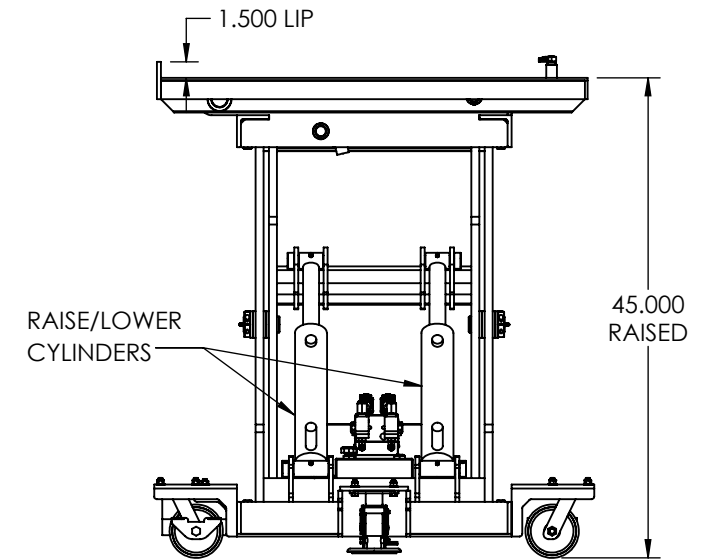
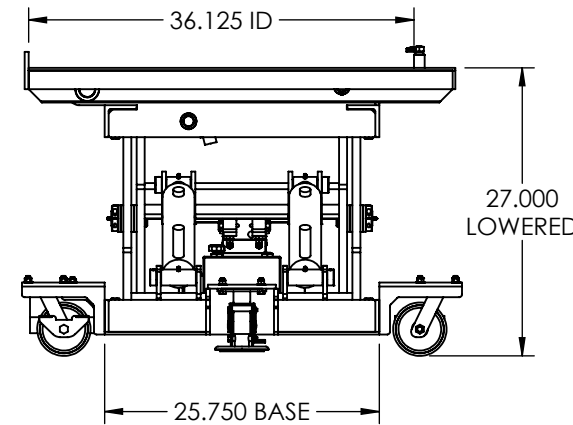
***CHANGED TO 4X SWIVEL CASTERS WITH TOP LOCK BRAKE DURING PRODUCTION PROCESSING**



↑
18" TRAVEL
↓

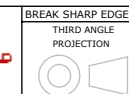


Ø5.00 POLY ON IRON SWIVEL CASTERS WITH TOP LOCK BRAKES X4



REFERENCE QUOTE DRAWING #D2211505-01 REV A

PROPRIETARY AND CONFIDENTIAL, THE INFORMATION CONTAINED IN THIS DRAWING IS THE SOLE PROPERTY OF LANGE LIFT. ANY REPRODUCTION IN PART OR AS A WHOLE WITHOUT THE WRITTEN PERMISSION OF LANGE LIFT IS PROHIBITED.



BREAK SHARP EDGES
THIRD ANGLE PROJECTION

TOLERANCES UNLESS NOTED X.XX +/- 0.10 X.XXX +/- 0.030 ANGLE +/- 0.5° DIMENSIONS ARE IN INCHES

DESCRIPTION: CUSTOM SCISSOR LIFT W/TILT DECK	REV: -
SCALE: NTS	DRAWN BY: DBK
DATE: 6/21/2022	DWG NO: 40682
SHEET: 1 OF 1	