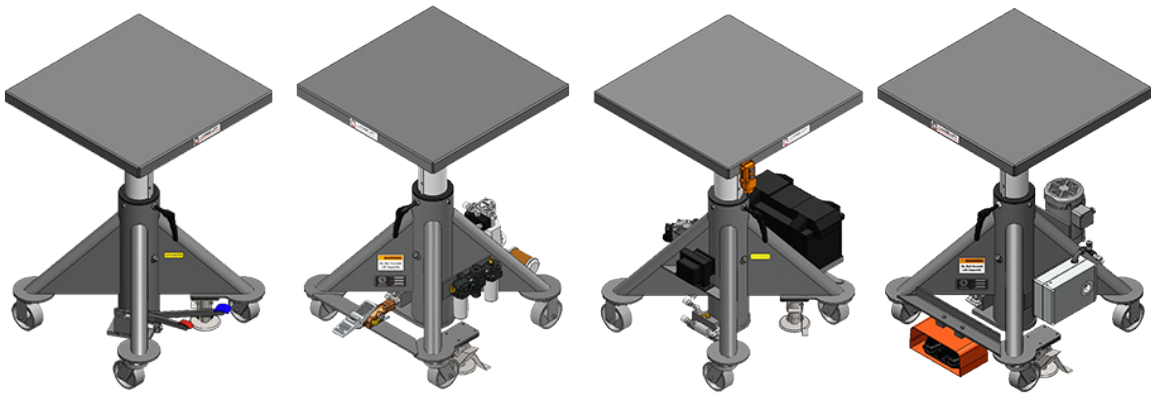


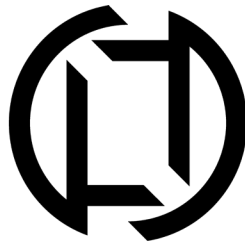
LANGE LIFT
PRODUCTS THAT LIFT THE WORLD



PRODUCT MANUAL



MADE IN THE USA



LANGE LIFT
PRODUCTS THAT LIFT THE WORLD

Thank you for purchasing a Lange Lift Table. We're honored to have you as a customer, and for placing your trust in us with your material handling needs. This product manual is intended to help familiarize you with your new table. Enclosed you will find information about your lift. If you have any questions, please contact our customer service team at 1-800-558-0577, or by email at sales@langelift.com

REMOVING THE TABLE FROM THE PALLET

Carefully undo the tie down wire around all four casters and discard. Using a forklift, position the forks under the bottom of the legs between the casters. Before driving forward, be sure that no contact will be made with the floor lock, casters, hose assemblies, or any other components.

⚠ NOTICE: NEVER LIFT THE TABLE OFF OF THE PALLET BY THE DECK. DOING SO MAY CAUSE DAMAGE TO THE INTERNAL COMPONENTS OF THE LIFT

With the forks safely under the legs of the table, ensuring stability, slowly raise the forks up to clear the table from the pallet, and slowly drive the lift table away from the pallet. Once clear of the pallet, gently lower the table to the ground.



TABLE SETUP

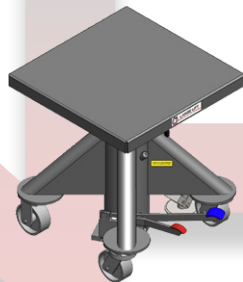
With the table on the floor, walk around and inspect for any visible damage. All freight damage must be noted on the bill of lading when taking delivery, and backed up by clear, concise documentation, including photos, in order for us to assist you with any freight claims with the freight carrier. If any damage is noted, please contact our customer service team at 1-800-558-0577, or by email at sales@langelift.com

Prior to operating your table, read through this manual thoroughly. We have four different types of lift tables, and this manual is divided into sections covering each type of lift. Below are the four varieties of tables, and their general features. More detailed information is enclosed within the specific product sections outlined within.

⚠ WARNING: DO NOT EXCEED LIFT CAPACITY

MANUAL LIFT TABLES

Manual Hydraulics. Foot Pump - Lift/Lower, 360° Continuous Deck Rotation with Lock Handle, 2x Each Cast Iron Rigid & Swivel Casters, 1x Floor Lock.



AIR LIFT TABLES

Air Powered Hydraulics. Air Valve Pedal - Lift/Lower, 360° Continuous Deck Rotation with Lock Handle, 2x Each Cast Iron Rigid & Swivel Casters, 1x Floor Lock, Air Motor with on Board Regulator, Filter & Lubricator, and Down Speed Flow Control Valve.



BATTERY LIFT TABLES

Battery Powered Hydraulics. 2 Button Pendant - Lift/Lower, 360° Continuous Deck Rotation with Lock Handle, 2x Each Cast Iron Rigid & Swivel Casters, 1x Floor Lock, Enclosed Battery, Charger, and Down Speed Flow Control Valve.

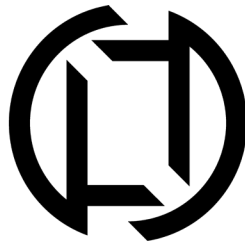


ELECTRIC LIFT TABLES

Electric Powered Hydraulics. Dual Guarded Foot Switch - Lift/Lower, 360° Continuous Deck Rotation with Lock Handle, 2x Each Cast Iron Rigid & Swivel Casters, 1x Floor Lock, Motor, Electrical Enclosure with Receptacle, and Down Speed Flow Control Valve.



GENERAL SETUP



LANGE LIFT
PRODUCTS THAT LIFT THE WORLD

GENERAL MAINTENANCE

CASTER LUBRICATION: We recommend general multi-purpose grease. Using a grease gun, lubricate all of the grease points on the casters as needed. The lubrication schedule will depend on the cleanliness of your usage area or workspace, and how often you move the table. Wipe up any excess grease. We recommend a greasing schedule of every 6 months for general use in clean environments.

FLOOR LOCK LUBRICATION: Locate the friction points and apply a moderate amount of standard 30 weight oil to each point, or an equivalent metal safe lubricant. Wipe away any excess oil. Lubricate as needed. The lubrication schedule will depend on the cleanliness of your usage area or workspace. We recommend a lubrication schedule of every 6 months for general use in clean environments.

GUIDE TUBE LUBRICATION: The Guide Tube is self-lubricating. It is normal to see a small amount of hydraulic oil on the Guide Tube, and on the upper surface of the Guide Tube Bearing. Wipe off any excess oil from the Upper Guide Tube Bearing as needed. See graphic for part locations.



NOTICE: DO NOT CLEAN THE GUIDE TUBE UNLESS IT IS DIRTY. SEE BELOW:

With the lift fully raised, apply a standard degreaser to the guide tube, and wipe with a clean, lint free shop cloth to keep the internal components free of potential debris. Clean the affected areas as needed. Once cleaned, perform a lift/lower cycle to re-lubricate the Guide Tube. The Guide Tube should be coated in a thin coat of hydraulic oil again, which is normal.

HYDRAULIC OIL LEVELS: Each lift table leaves the factory filled with the correct amount of oil. Since this is a closed hydraulic system, you should not need to add or replace hydraulic fluid unless there is a leak while replacing components, or the hydraulic oil needs to be replaced due to debris contamination.

We recommend ISO-46 Hydraulic Oil.

**LANGE LIFT RECOMMENDS
ISO-46 HYDRAULIC FLUID**

The fill level should be no more than 2" above the Lower Guide Tube Bearing. We recommend checking the fill level with a clean dipstick via the Hydraulic Oil Fill Plug. See graphic for part locations.

Hydraulic Oil can only be seen visually by removing the deck from the base of the table. If you need to perform this maintenance, please refer to our Lange Lift Parts Guide on our website. If you need a copy emailed to you, please contact sales@langelift.com



NOTICE: DO NOT OVERFILL HYDRAULIC FLUID

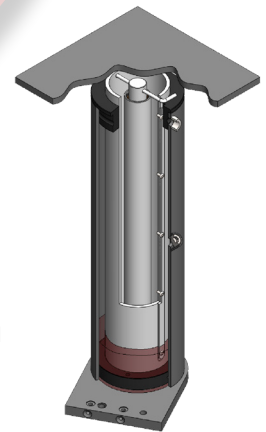
Overfilling the hydraulic fluid reservoir with oil may cause fluid to expel from the Upper Guide Tube Bearing and Guide Tube area during use. Our lift tables use a very low amount of hydraulic fluid, and should be no more than 2" above the Lower Guide Tube Bearing.

Recommended ISO-46 Hydraulic Oil Fill Levels by Lift Table Capacity:

- 1,000 lb. Capacity Tables - 1 Quart
- 2,000 lb. Capacity Tables - 1 Quart
- 3,000 lb. Capacity Tables - 1-1/2 Quarts
- 4,000 lb. Capacity Tables - 2 Quarts
- 5,000 lb. Capacity Tables - 2 Quarts

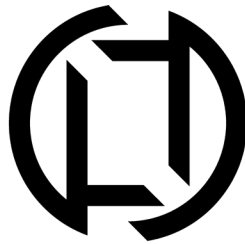
MODIFIED & CUSTOM LIFT TABLES:

If you own one of our Modified Lift Tables or Custom Products, please refer to the Manual or Supplemental documentation that may have been shipped with that specific lift, or emailed to your purchasing agent. If you require a copy of a manual, please call or email our sales department, and we will be happy to provide one if one is available. If a Custom Product Manual was not outlined in a SOW (Statement of Work), Quote, or Signed Approval Drawing, one may not be available due to the complexities involved in doing so for Custom Made Material Handling Products with unique, non-standard applications. We will do our best to answer or address questions on a case by case basis.



LOCAL: (262) 502-0333 | TOLL FREE: (800) 558-0577 | EMAIL: SALES@LANGELIFT.COM

WWW.LANGELIFT.COM



LANGE LIFT
PRODUCTS THAT LIFT THE WORLD

SQUARE - MANUAL HYDRAULIC LIFT TABLES: Have matching deck and base dimensions, with capacities ranging from 1,000 to 4,000 pounds in all four size varieties – 24" Square, 30" Square, 36" Square, and 48" Square. Achieve maximum stability under load, 360° continuous deck rotation with deck rotation lock handle, mobility on casters, floor lock for stationary operation, and rugged, all steel construction.

DECK: 1/4" Thick, Formed & Welded Steel Deck, 360° Continuous Rotation at any Height, and Deck Rotation Lock Handle
BASE: Formed Steel Legs and Welded Steel Frame, 2x Each Ø5" Cast Iron Rigid and Swivel Casters, 1x Foot Actuated Floor Lock
RAISED HEIGHT: 45"
LOWERED HEIGHT: 27"
VERTICAL TRAVEL: 18"
POWER: Manual Foot Pump
CONTROLS: Foot Pedals - Lift/Lower
PAINT: Lange Lift Shadow Gray

MANUAL LIFT TABLES



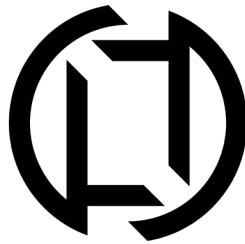
MODEL	CAPACITY	DECK & BASE SIZE
L-124	1,000 lbs.	24" Square
L-130	1,000 lbs.	30" Square
L-136	1,000 lbs.	36" Square
L-148	1,000 lbs.	48" Square
L-224	2,000 lbs.	24" Square
L-230	2,000 lbs.	30" Square
L-236	2,000 lbs.	36" Square
L-248	2,000 lbs.	48" Square
L-324	3,000 lbs.	24" Square
L-330	3,000 lbs.	30" Square
L-336	3,000 lbs.	36" Square
L-348	3,000 lbs.	48" Square
L-424	4,000 lbs.	24" Square
L-430	4,000 lbs.	30" Square
L-436	4,000 lbs.	36" Square
L-448	4,000 lbs.	48" Square

WARNING
Do Not Exceed
Lift Capacity



LOCAL: (262) 502-0333 | TOLL FREE: (800) 558-0577 | EMAIL: SALES@LANGELIFT.COM

WWW.LANGELIFT.COM



LANGE LIFT
PRODUCTS THAT LIFT THE WORLD

ROUND - MANUAL HYDRAULIC LIFT TABLES: Have matching base dimensions that are equal to the diameter of the round deck, with capacities ranging from 1,000 to 2,000 pounds in a single size - 30" Round. Achieve maximum stability under load, 360° continuous deck rotation with deck rotation lock handle, mobility on casters, floor lock for stationary operation, and rugged, all steel construction.

DECK: 1/4" Thick, Formed & Welded Steel Deck, 360° Continuous Rotation at any Height, and Deck Rotation Lock Handle

BASE: Formed Steel Legs and Welded Steel Frame, 2x Each Ø5" Cast Iron Rigid and Swivel Casters, 1x Foot Actuated Floor Lock

RAISED HEIGHT: 45"

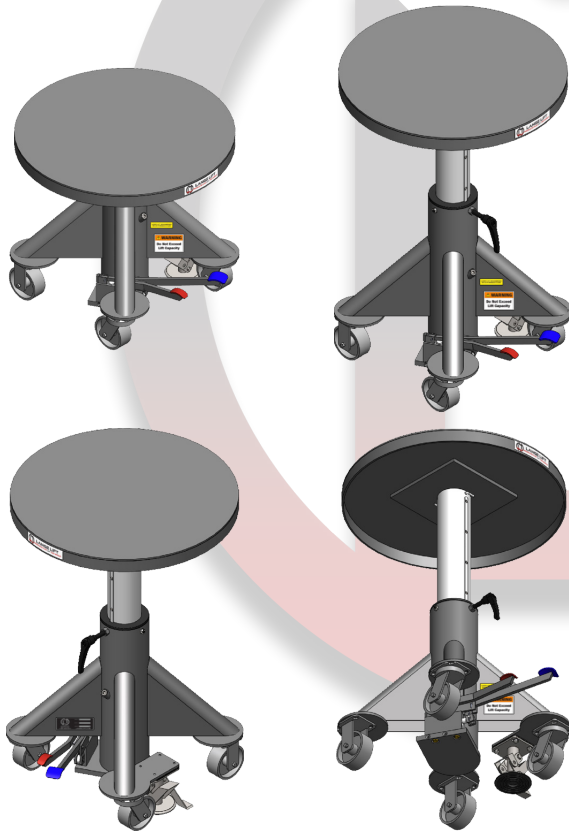
LOWERED HEIGHT: 27"

VERTICAL TRAVEL: 18"

POWER: Manual Foot Pump

CONTROLS: Foot Pedals - Lift/Lower

PAINT: Lange Lift Shadow Gray



MODEL	CAPACITY	DECK & BASE SIZE
L-124-30RD	1,000 lbs.	Ø30"
L-224-30RD	2,000 lbs.	Ø30"

WARNING
Do Not Exceed
Lift Capacity

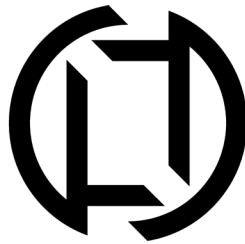


MADE IN THE USA

LOCAL: (262) 502-0333 | TOLL FREE: (800) 558-0577 | EMAIL: SALES@LANGELIFT.COM

WWW.LANGELIFT.COM

MANUAL LIFT TABLES



LANGE LIFT
PRODUCTS THAT LIFT THE WORLD

LOADING: Prior to placing any materials on the deck, the table must be on level ground, the **Floor Lock** fully engaged with the floor, and the **Lock Handle** tightened to prevent deck rotation. Materials are intended to be placed with the center of mass in the center of the deck, directly over the lift column. You must secure any materials to the deck as needed. Always use the proper safety equipment & precautions as required by your materials, working environment, and surroundings.

! WARNING: IMPROPER LOADING COULD CAUSE SERIOUS INJURY OR DEATH
WARNING: DO NOT EXCEED LIFT CAPACITY

LIFTING: With the **Floor Lock** fully engaged, push down the **Lift Pedal** with your foot to raise the deck. Each complete pump of the **Lift Pedal** will incrementally raise the deck of the lift table until it has reached the raised height of 45" from the top of the deck to the floor. You can stop lifting the deck at any height within its travel range of 18". The hydraulic system has an internal bleeding mechanism to reduce the chance of internal damage to the lift components if the **Lift Pedal** is continuously pumped after it has reached its maximum stroke, however you should not continue to do so. If over-pumped, the table will extend slightly beyond the full 45" stroke, and slowly settle to 45" once the over-stroke has bled out.

! NOTICE: DO NOT STAND ON THE LIFT PEDAL. DOING SO MAY DAMAGE THE PUMP ARM, OR INTERNAL PUMP COMPONENTS.

LOWERING: With the **Floor Lock** fully engaged, slowly, and gently push down the **Lowering Pedal** with your foot. The deck will lower continuously at a steady, even rate, while the **Lowering Pedal** is being depressed, or until the deck reaches the lowered height of 27" from the top of the deck to the floor. Removing your foot from the **Lowering Pedal**, the deck will stop at any height within its travel range of 18". You can slightly control the down speed by regulating the pressure applied with your foot to the lowering pedal. If the table is loaded with material, it will lower at a faster rate than when it is unloaded.

LOCK HANDLE: The **Lock Handle** secures the deck rotation when tightened, and allows deck rotation when loosened. The **Lock Handle Arm** is adjustable by pressing the center button, which disengages the handle from the locking mechanism to allow repositioning. Slight rotational movement of the deck while the **Lock Handle** is fully engaged is expected. Over-tightening the lock handle may damage the **Upper Guide Tube Bearing**.

! NOTICE: DO NOT OVER TIGHTEN THE LOCK HANDLE

DECK ROTATION: Press the center button on the lock handle to adjust the handle position. With the **Lock Handle** in the desired position, and not interfering with the deck, turn it counter clockwise until it is loose enough to rotate the deck. With the **Lock Handle** disengaged, the deck can be rotated 360° continuously in either direction. You may lock the deck in place at any height, and in any positioning by adjusting the **Lock Handle** in the desired position, and turning it clockwise until it is hand tight.

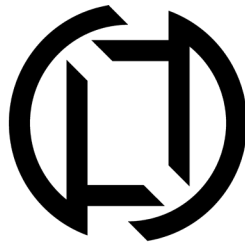
! NOTICE: THE LOCK HANDLE ARM MUST BE POSITIONED TOWARDS THE FLOOR TO PREVENT CONTACT WITH THE DECK

FLOOR LOCK: With the **Lift Table** on level ground, engage the **Floor Lock** by depressing the locking mechanism with your foot until it locks in place. To disengage the **Floor Lock**, depress the release mechanism with your foot until the arm snaps up. **Floor Locks** are not intended to lift or elevate. They are intended to be a supplemental support to reduce unwanted movement, and cannot carry the weight of the entire application. **Floor Locks** are a brake, not a jack! Excessive force to the **Lift Table** will still allow it to move.

! CAUTION: DO NOT ENGAGE OR DISENGAGE THE FLOOR LOCK WITH ANY PART OF YOUR BODY OTHER THAN YOUR FOOT.

MOVEMENT: Each table has a combination of two swivel and two rigid casters that are welded to the base of the table. Materials must be properly secured before moving the table from one location to the next, and should only be loaded to a level that can be safely moved. See the Loading section on this page for more information about load placement. The moving surface must be completely smooth, flat, and free of all debris. All people or personnel must be away from the front of the table while it is being moved. Always use the proper safety equipment & precautions as required by your materials, working environment, and surroundings.

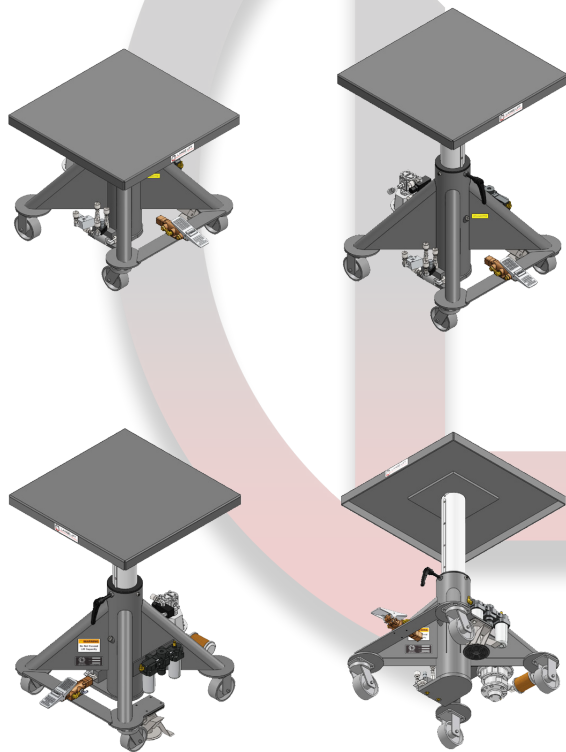




LANGELIFT
PRODUCTS THAT LIFT THE WORLD

AIR POWERED HYDRAULIC LIFT TABLES: Have matching deck and base dimensions, with capacities ranging from 1,000 to 5,000 pounds in all four size varieties – 24" Square, 30" Square, 36" Square, and 48" Square. Achieve maximum stability under load, 360° continuous deck rotation with deck rotation lock handle, mobility on casters, floor lock for stationary operation, and rugged, all steel construction. With on board air components, supplying shop air at a recommended 80 PSI @ 50 CFM offers a powerful lifting solution in any shop, particularly in combustible environments.

DECK: 1/4" Thick, Formed & Welded Steel Deck, 360° Continuous Rotation at any Height, and Deck Rotation Lock Handle
BASE: Formed Steel Legs and Welded Steel Frame, 2x Each Ø5" Cast Iron Rigid and Swivel Casters, 1x Foot Actuated Floor Lock
RAISED HEIGHT: 45"
LOWERED HEIGHT: 27"
VERTICAL TRAVEL: 18"
POWER: Air Motor – 80 PSI @ 50 CFM (Recommended), On Board Air Regulator, Filter, and Lubricator
CONTROLS: Air Valve Pedal – Lift/Lower
PAINT: Lange Lift Shadow Gray



MODEL	CAPACITY	DECK & BASE SIZE
L-124-AP	1,000 lbs.	24" Square
L-130-AP	1,000 lbs.	30" Square
L-136-AP	1,000 lbs.	36" Square
L-148-AP	1,000 lbs.	48" Square
L-224-AP	2,000 lbs.	24" Square
L-230-AP	2,000 lbs.	30" Square
L-236-AP	2,000 lbs.	36" Square
L-248-AP	2,000 lbs.	48" Square
L-324-AP	3,000 lbs.	24" Square
L-330-AP	3,000 lbs.	30" Square
L-336-AP	3,000 lbs.	36" Square
L-348-AP	3,000 lbs.	48" Square
L-424-AP	4,000 lbs.	24" Square
L-430-AP	4,000 lbs.	30" Square
L-436-AP	4,000 lbs.	36" Square
L-448-AP	4,000 lbs.	48" Square
L-524-AP	5,000 lbs.	24" Square
L-530-AP	5,000 lbs.	30" Square
L-536-AP	5,000 lbs.	36" Square
L-548-AP	5,000 lbs.	48" Square

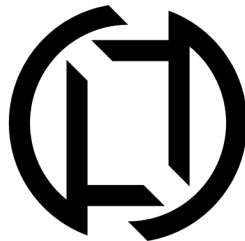
WARNING
Do Not Exceed
Lift Capacity



AIR LIFT TABLES

LOCAL: (262) 502-0333 | TOLL FREE: (800) 558-0577 | EMAIL: SALES@LANGELIFT.COM

WWW.LANGELIFT.COM



LANGE LIFT
PRODUCTS THAT LIFT THE WORLD

LOADING: Prior to placing any materials on the deck, the table must be on level ground, the Floor Lock fully engaged with the floor, and the Lock Handle tightened to prevent deck rotation. Materials are intended to be placed with the center of mass in the center of the deck, directly over the lift column. You must secure any materials to the deck as needed. Always use the proper safety equipment & precautions as required by your materials, working environment, and surroundings.



WARNING: IMPROPER LOADING COULD CAUSE SERIOUS INJURY OR DEATH
WARNING: DO NOT EXCEED LIFT CAPACITY

LIFTING: With the Floor Lock fully engaged, connect the shop air line to the air inlet. Push backward on the Air Valve Pedal with your foot to raise the deck. Holding down the Air Valve Pedal will continuously raise the deck of the lift table until it has reached the raised height of 45" from the top of the deck to the floor. You can stop lifting the deck at any height within its travel range of 18". The hydraulic system has an internal bleeding mechanism that will reduce the chance of internal damage to the lift components if the Air Valve Pedal is continuously pressed after it has reached its maximum stroke, however you should release the Air Valve Pedal within 5 seconds of reaching the table's full stroke. The table will extend slightly beyond the full 45" stroke, and slowly settle to 45" once the over-stroke has bled out.

LOWERING: With the Floor Lock fully engaged, push forward on the Air Valve Pedal with your foot. The deck will lower continuously at a steady, even rate, while the Air Valve Pedal is being depressed, or until the deck reaches the lowered height of 27" from the top of the deck to the floor. Releasing the Air Valve Pedal, the deck will stop at any height within its travel range of 18". You can control the down speed with the hand adjustable Flow Control Valve. If the table is loaded with material, it will lower at a faster rate than when it is unloaded.

LOCK HANDLE: The Lock Handle secures the deck rotation when tightened, and allows deck rotation when loosened. The Lock Handle Arm is adjustable by pressing the center button, which disengages the handle from the locking mechanism to allow repositioning. Slight rotational movement of the deck while the Lock Handle is fully engaged is expected. Over tightening the lock handle may damage the Upper Guide Tube Bearing.



NOTICE: DO NOT OVER TIGHTEN THE LOCK HANDLE

DECK ROTATION: Press the center button on the lock handle to adjust the handle position. With the Lock Handle in the desired position, and not interfering with the deck, turn it counter clockwise until it is loose enough to rotate the deck. With the Lock Handle disengaged, the deck can be rotated 360° continuously in either direction. You may lock the deck in place at any height, and in any positioning by adjusting the Lock Handle in the desired position, and turning it clockwise until it is hand tight.



NOTICE: THE LOCK HANDLE ARM MUST BE POSITIONED TOWARDS THE FLOOR TO PREVENT CONTACT WITH THE DECK

FLOOR LOCK: With the Lift Table on level ground, engage the Floor Lock by depressing the locking mechanism with your foot until it locks in place. To disengage the Floor Lock, depress the release mechanism with your foot until the arm snaps up. Floor Locks are not intended to lift or elevate. They are intended to be a supplemental support to reduce unwanted movement, and cannot carry the weight of the entire application. Floor Locks are a brake, not a jack! Excessive force to the Lift Table will still allow it to move.



CAUTION: DO NOT ENGAGE OR DISENGAGE THE FLOOR LOCK WITH ANY PART OF YOUR BODY OTHER THAN YOUR FOOT.

MOVEMENT: All air hoses must be disconnected and secured prior to moving the table. Each table has a combination of two swivel and two rigid casters that are welded to the base of the table. Materials must be properly secured before moving the table from one location to the next, and should only be loaded to a level that can be safely moved. See the Loading section on this page for more information about load placement. The moving surface must be completely smooth, flat, and free of all debris. All people or personnel must be away from the front of the table while it is being moved. Always use the proper safety equipment & precautions as required by your materials, working environment, and surroundings.

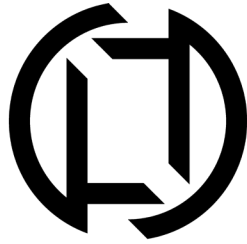


MADE IN THE USA

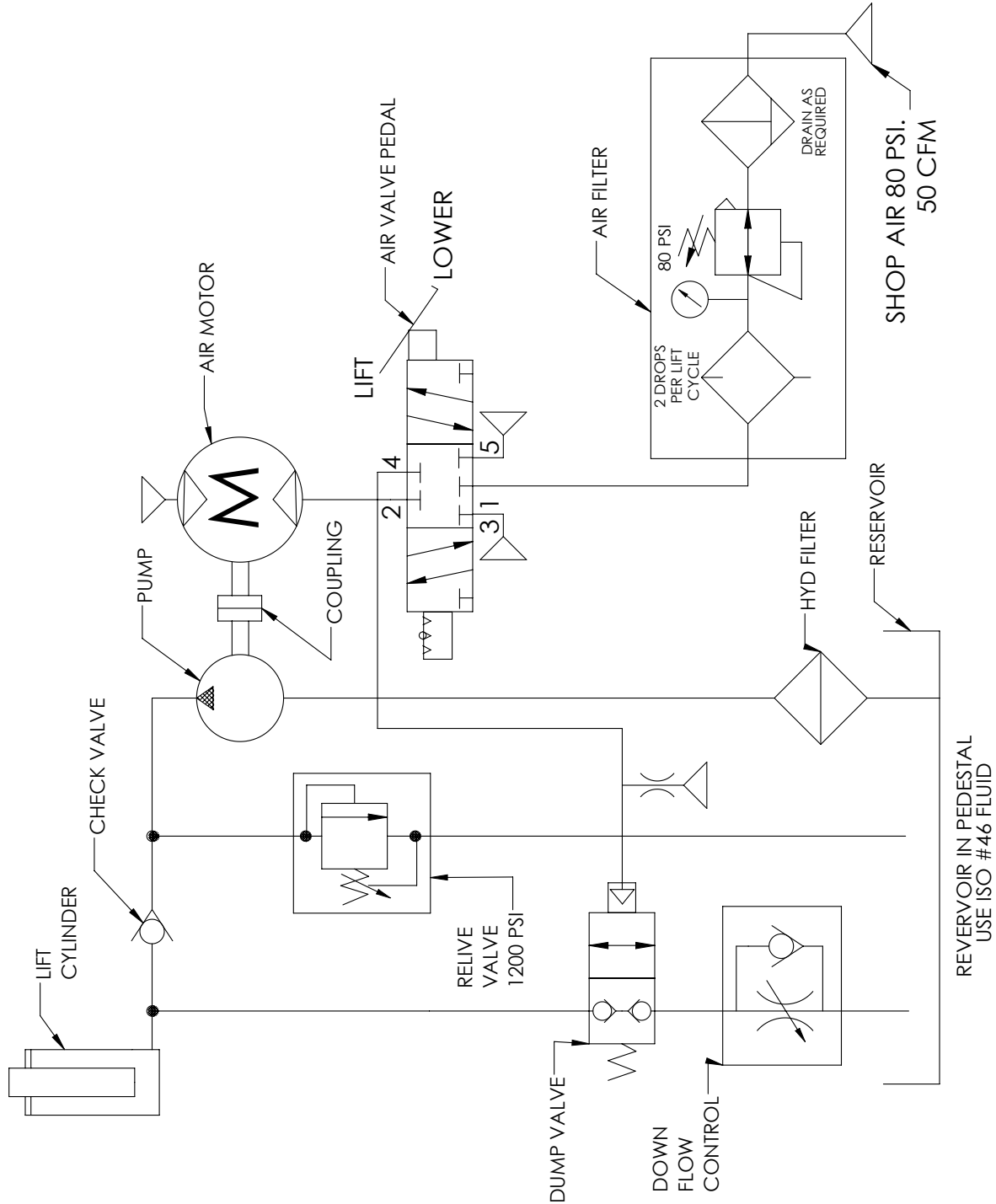
AIR LIFT TABLES

LOCAL: (262) 502-0333 | TOLL FREE: (800) 558-0577 | EMAIL: SALES@LANGELIFT.COM

WWW.LANGELIFT.COM



LANGE LIFT
PRODUCTS THAT LIFT THE WORLD



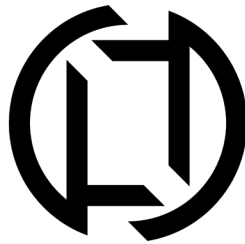
AIR POWERED LIFT TABLE - CIRCUIT DIAGRAM v1

AIR LIFT TABLES



LOCAL: (262) 502-0333 | TOLL FREE: (800) 558-0577 | EMAIL: SALES@LANGELIFT.COM

WWW.LANGELIFT.COM



LANGELIFT
PRODUCTS THAT LIFT THE WORLD

BATTERY POWERED HYDRAULIC LIFT TABLES: Have matching deck and base dimensions, with capacities ranging from 1,000 to 5,000 pounds in all four size varieties – 24" Square, 30" Square, 36" Square, and 48" Square. Achieve maximum stability under load, 360° continuous deck rotation with deck rotation lock handle, mobility on casters, floor lock for stationary operation, and rugged, all steel construction. The on board battery and charger make these lifts ideal for any industrial or aerospace environments with high mobility requirements.

DECK: 1/4" Thick, Formed & Welded Steel Deck, 360° Continuous Rotation at any Height, and Deck Rotation Lock Handle

BASE: Formed Steel Legs and Welded Steel Frame, 2x Each Ø5" Cast Iron Rigid and Swivel Casters, 1x Foot Actuated Floor Lock

RAISED HEIGHT: 45"

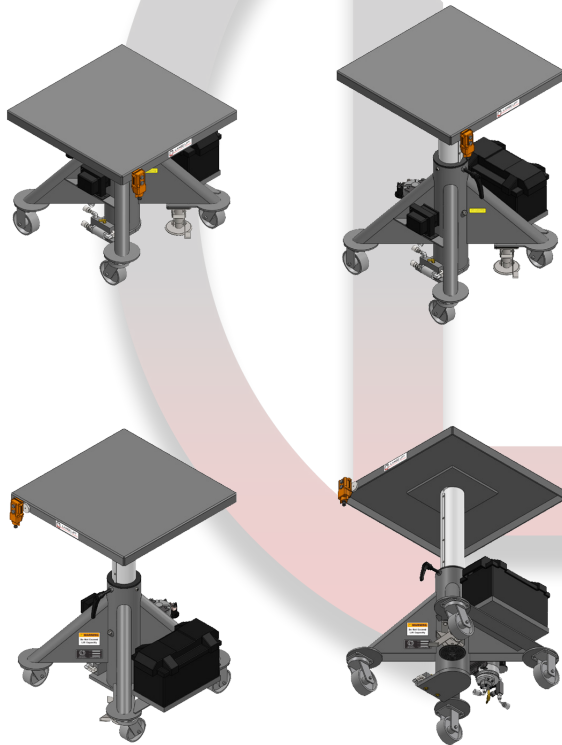
LOWERED HEIGHT: 27"

VERTICAL TRAVEL: 18"

POWER: 12V Deep Cycle Battery (Enclosed), DC Motor, and On Board Battery Charger

CONTROLS: Push Button Coil Corded Pendant Control - Lift/Lower

PAINT: Lange Lift Shadow Gray



MODEL	CAPACITY	DECK & BASE SIZE
L-124-BP	1,000 lbs.	24" Square
L-130-BP	1,000 lbs.	30" Square
L-136-BP	1,000 lbs.	36" Square
L-148-BP	1,000 lbs.	48" Square
L-224-BP	2,000 lbs.	24" Square
L-230-BP	2,000 lbs.	30" Square
L-236-BP	2,000 lbs.	36" Square
L-248-BP	2,000 lbs.	48" Square
L-324-BP	3,000 lbs.	24" Square
L-330-BP	3,000 lbs.	30" Square
L-336-BP	3,000 lbs.	36" Square
L-348-BP	3,000 lbs.	48" Square
L-424-BP	4,000 lbs.	24" Square
L-430-BP	4,000 lbs.	30" Square
L-436-BP	4,000 lbs.	36" Square
L-448-BP	4,000 lbs.	48" Square
L-524-BP	5,000 lbs.	24" Square
L-530-BP	5,000 lbs.	30" Square
L-536-BP	5,000 lbs.	36" Square
L-548-BP	5,000 lbs.	48" Square

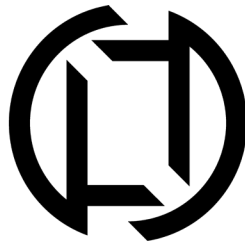
WARNING
Do Not Exceed
Lift Capacity



BATTERY LIFT TABLES

LOCAL: (262) 502-0333 | TOLL FREE: (800) 558-0577 | EMAIL: SALES@LANGELIFT.COM

WWW.LANGELIFT.COM



LANGE LIFT
PRODUCTS THAT LIFT THE WORLD

BATTERY LIFT TABLES

LOADING: Prior to placing any materials on the deck, the table must be on level ground, the Floor Lock fully engaged with the floor, and the Lock Handle tightened to prevent deck rotation. Materials are intended to be placed with the center of mass in the center of the deck, directly over the lift column. You must secure any materials to the deck as needed. Always use the proper safety equipment & precautions as required by your materials, working environment, and surroundings.

 **WARNING: IMPROPER LOADING COULD CAUSE SERIOUS INJURY OR DEATH**
WARNING: DO NOT EXCEED LIFT CAPACITY

LIFTING: With the Floor Lock fully engaged, push the Lift Button on the Pendant Control to raise the deck. Holding down the Pendant Control Lift Button will continuously raise the deck of the lift table until it has reached the raised height of 45" from the top of the deck to the floor. You can stop lifting the deck at any height within its travel range of 18". The hydraulic system has an internal bleeding mechanism that will reduce the chance of internal damage to the lift components if the Pendant Control Lift Button is continuously pressed after it has reached its maximum stroke, however you should release the Pendant Control Lift Button within 5 seconds of reaching the table's full stroke. The table will extend slightly beyond the full 45" stroke, and slowly settle to 45" once the over-stroke has bled out.

LOWERING: With the Floor Lock fully engaged, push the Lower Button on the Pendant Control. The deck will lower continuously at a steady, even rate, while the Pendant Control Lower Button is being depressed, or until the deck reaches the lowered height of 27" from the top of the deck to the floor. Releasing the Pendant Control Lower Button the deck will stop at any height within its travel range of 18". You can control the down speed with the hand adjustable Flow Control Valve. If the table is loaded with material, it will lower at a faster rate than when it is unloaded.

LOCK HANDLE: The Lock Handle secures the deck rotation when tightened, and allows deck rotation when loosened. The Lock Handle Arm is adjustable by pressing the center button, which disengages the handle from the locking mechanism to allow repositioning. Slight rotational movement of the deck while the Lock Handle is fully engaged is expected. Over tightening the lock handle may damage the Upper Guide Tube Bearing.

 **NOTICE: DO NOT OVER TIGHTEN THE LOCK HANDLE**

DECK ROTATION: Press the center button on the lock handle to adjust the handle position. With the Lock Handle in the desired position, and not interfering with the deck, turn it counter clockwise until it is loose enough to rotate the deck. With the Lock Handle disengaged, the deck can be rotated 360° continuously in either direction. You may lock the deck in place at any height, and in any positioning by adjusting the Lock Handle in the desired position, and turning it clockwise until it is hand tight.

 **NOTICE: THE LOCK HANDLE ARM MUST BE POSITIONED TOWARDS THE FLOOR TO PREVENT CONTACT WITH THE DECK**

FLOOR LOCK: With the Lift Table on level ground, engage the Floor Lock by depressing the locking mechanism with your foot until it locks in place. To disengage the Floor Lock, depress the release mechanism with your foot until the arm snaps up. Floor Locks are not intended to lift or elevate. They are intended to be a supplemental support to reduce unwanted movement, and cannot carry the weight of the entire application. Floor Locks are a brake, not a jack! Excessive force to the Lift Table will still allow it to move.

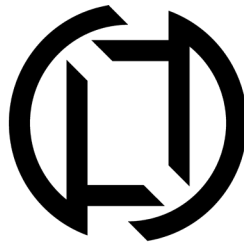
 **CAUTION: DO NOT ENGAGE OR DISENGAGE THE FLOOR LOCK WITH ANY PART OF YOUR BODY OTHER THAN YOUR FOOT.**

MOVEMENT: All air hoses must be disconnected and secured prior to moving the table. Each table has a combination of two swivel and two rigid casters that are welded to the base of the table. Materials must be properly secured before moving the table from one location to the next, and should only be loaded to a level that can be safely moved. See the Loading section on this page for more information about load placement. The moving surface must be completely smooth, flat, and free of all debris. All people or personnel must be away from the front of the table while it is being moved. Always use the proper safety equipment & precautions as required by your materials, working environment, and surroundings.



LOCAL: (262) 502-0333 | TOLL FREE: (800) 558-0577 | EMAIL: SALES@LANGELIFT.COM

WWW.LANGELIFT.COM



LANGE LIFT
PRODUCTS THAT LIFT THE WORLD



WARNING: IMPROPER LOADING COULD CAUSE SERIOUS INJURY OR DEATH
WARNING: DO NOT EXCEED LIFT CAPACITY

BATTERY: To prevent accidental operation in transit, all battery powered tables are shipped with the battery cables disconnected.

Charging the battery: charge the battery in a well ventilated area, away from open flames or sparks.

Connect the battery charger's plug to a 120V AC Grounded electrical outlet. Normal charge time is 8-10 hours. Lamps on the charger indicate the condition of the battery. Charging will stop automatically when the battery is fully charged, indicated by the lamp on the charger. Safely remove the plug from the outlet and stow the cord. Please call or email to request additional information on the battery charger.

BATTERY MAINTENANCE: Observe the following battery cycle maintenance procedures to obtain good performance and maximum cycle life.

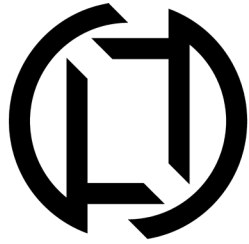
1. Always observe the following personal safety precautions when working with lead acid batteries:
 - Someone should be within range of your voice and close enough to come to your aid when you work near a battery.
 - Have plenty of fresh water and soap nearby in case battery acid contacts skin, clothing, or eyes.
 - Wear complete eye and clothing protection. Avoid touching eyes while working near battery.
 - If battery acid contacts skin or clothing, wash immediately with soap and water. If acid enters eye, immediately flush eye with running cold water for at least ten minutes and seek medical attention.
 - Never smoke, allow spark, or flame in the vicinity of the battery.
 - Be extra cautious to reduce risk of dropping a metal tool onto the battery terminals. It might spark or short-circuit the battery.
 - Never charge a frozen battery.
2. New batteries are not capable of their rated output until they have been discharged a number of times. We suggest limiting their use early on.
3. Do not excessively discharge batteries. Excessive discharge can cause polarity reversal of individual cells resulting in complete failure shortly thereafter. Limited use of new batteries will minimize the chance of cell reversal.
4. Check the level of electrolytes in conventional lead acid batteries monthly. Maintain the proper electrolyte level by adding distilled or purified water when necessary. Electrolyte levels lower during discharging and rise during charging, therefore it is mandatory that water be added to the cells only when they are fully charged; do not overfill. Old batteries require more frequent additions of water than new batteries.
5. Keep tops of batteries clean and dry to prevent excessive self-discharge. Keep battery terminals hand tight.



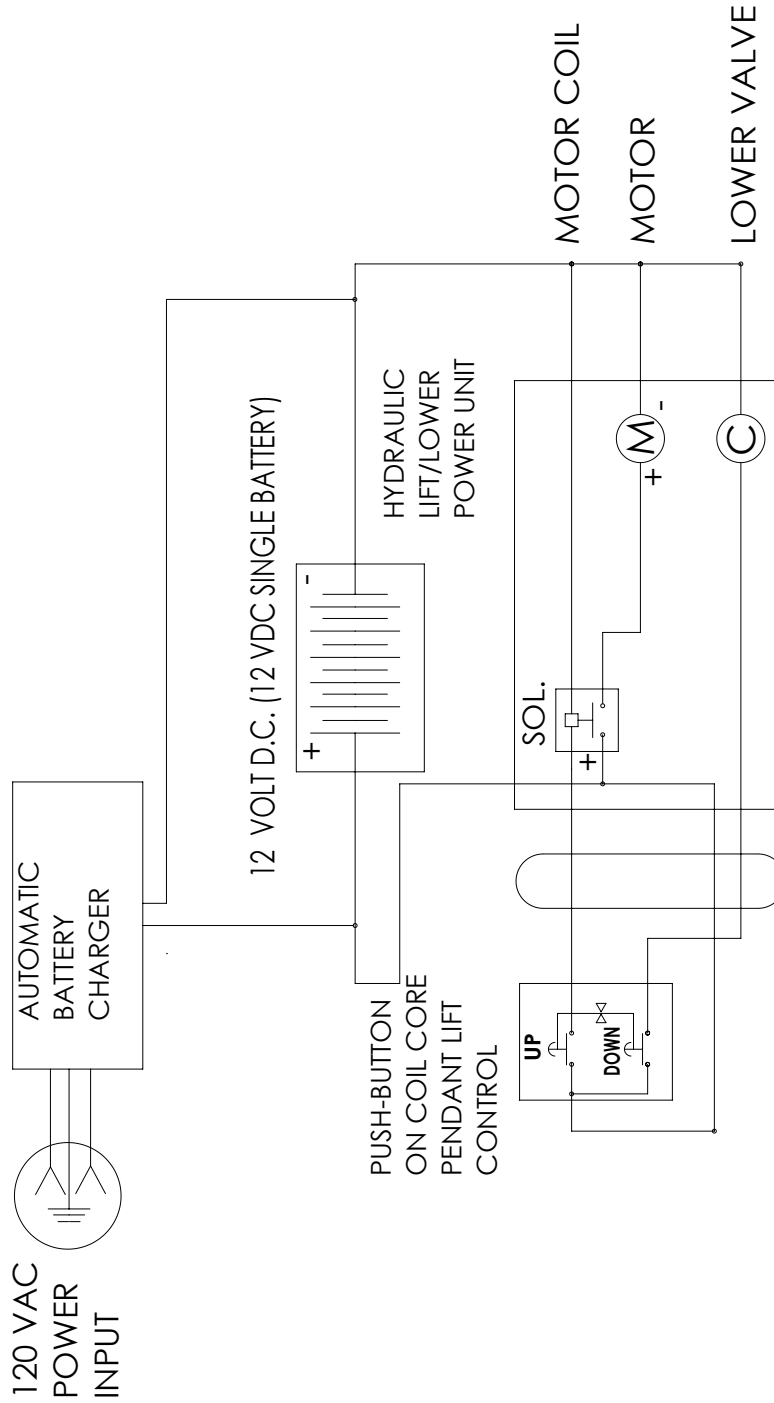
LOCAL: (262) 502-0333 | TOLL FREE: (800) 558-0577 | EMAIL: SALES@LANGELIFT.COM

WWW.LANGELIFT.COM

BATTERY LIFT TABLES



LANGE LIFT
PRODUCTS THAT LIFT THE WORLD



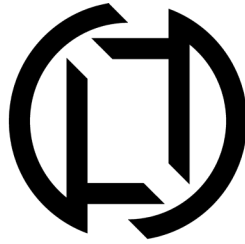
BATTERY POWERED LIFT TABLE - CIRCUIT DIAGRAM v1

BATTERY LIFT TABLES

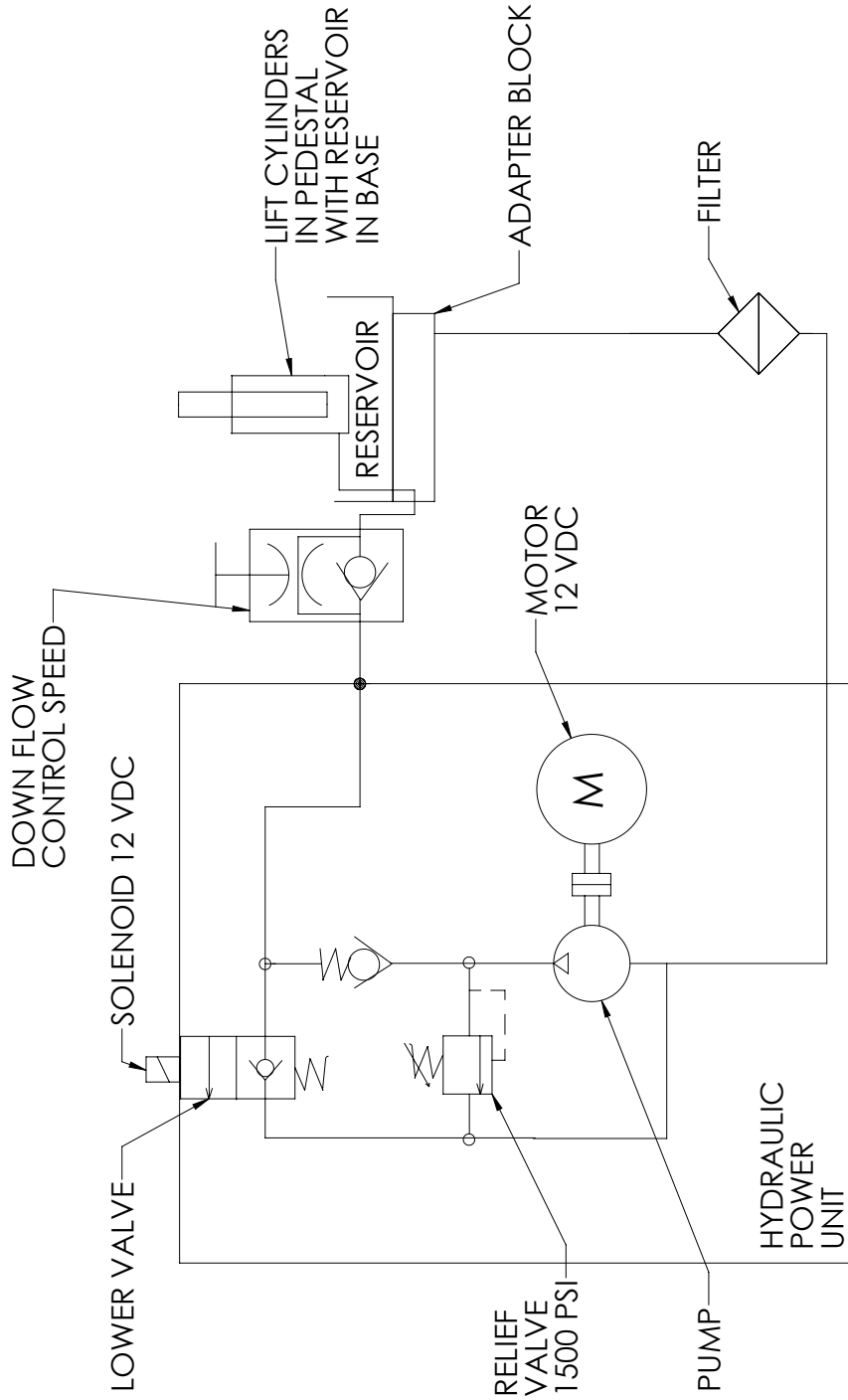


LOCAL: (262) 502-0333 | TOLL FREE: (800) 558-0577 | EMAIL: SALES@LANGELIFT.COM

WWW.LANGELIFT.COM



LANGE LIFT
PRODUCTS THAT LIFT THE WORLD



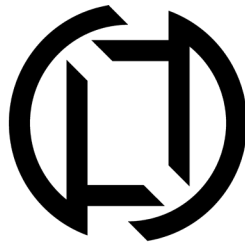
BATTERY POWERED LIFT TABLE - HYDRAULIC DIAGRAM v1

BATTERY LIFT TABLES



LOCAL: (262) 502-0333 | TOLL FREE: (800) 558-0577 | EMAIL: SALES@LANGELIFT.COM

WWW.LANGELIFT.COM



LANGE LIFT
PRODUCTS THAT LIFT THE WORLD

ELECTRIC POWERED HYDRAULIC LIFT TABLES: Have matching deck and base dimensions, with capacities ranging from 1,000 to 5,000 pounds in all four size varieties – 24" Square, 30" Square, 36" Square, and 48" Square. Achieve maximum stability under load, 360° continuous deck rotation with deck rotation lock handle, mobility on casters, floor lock for stationary operation, and rugged, all steel construction. Ideal for high cycle material handling environments where raising and lowering speeds are crucial for maximum efficiency.

DECK: 1/4" Thick, Formed & Welded Steel Deck, 360° Continuous Rotation at any Height, and Deck Rotation Lock Handle

BASE: Formed Steel Legs and Welded Steel Frame, 2x Each Ø5" Cast Iron Rigid and Swivel Casters, 1x Foot Actuated Floor Lock

RAISED HEIGHT: 45"

LOWERED HEIGHT: 27"

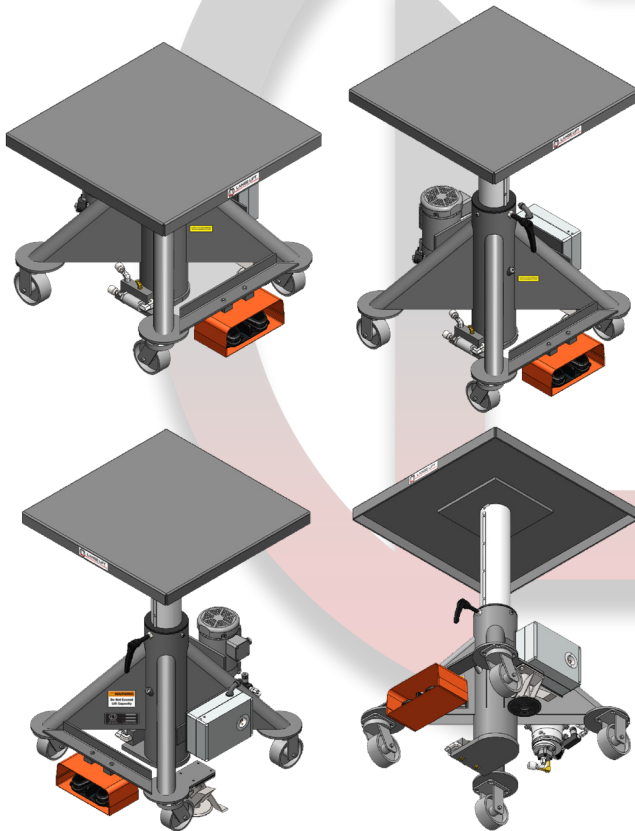
VERTICAL TRAVEL: 18"

POWER: 120V AC Electric over Hydraulic Motor

CONTROLS: Guarded Dual Foot Switch – Lift/Lower

PAINT: Lange Lift Shadow Gray

ELECTRIC LIFT TABLES



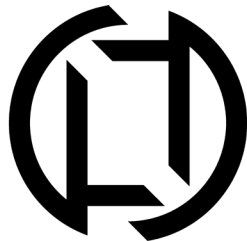
MODEL	CAPACITY	DECK & BASE SIZE
L-124-EP	1,000 lbs.	24" Square
L-130-EP	1,000 lbs.	30" Square
L-136-EP	1,000 lbs.	36" Square
L-148-EP	1,000 lbs.	48" Square
L-224-EP	2,000 lbs.	24" Square
L-230-EP	2,000 lbs.	30" Square
L-236-EP	2,000 lbs.	36" Square
L-248-EP	2,000 lbs.	48" Square
L-324-EP	3,000 lbs.	24" Square
L-330-EP	3,000 lbs.	30" Square
L-336-EP	3,000 lbs.	36" Square
L-348-EP	3,000 lbs.	48" Square
L-424-EP	4,000 lbs.	24" Square
L-430-EP	4,000 lbs.	30" Square
L-436-EP	4,000 lbs.	36" Square
L-448-EP	4,000 lbs.	48" Square
L-524-EP	5,000 lbs.	24" Square
L-530-EP	5,000 lbs.	30" Square
L-536-EP	5,000 lbs.	36" Square
L-548-EP	5,000 lbs.	48" Square

WARNING
Do Not Exceed
Lift Capacity



LOCAL: (262) 502-0333 | TOLL FREE: (800) 558-0577 | EMAIL: SALES@LANGELIFT.COM

WWW.LANGELIFT.COM



LANGE LIFT
PRODUCTS THAT LIFT THE WORLD

ELECTRIC LIFT TABLES

LOADING: Prior to placing any materials on the deck, the table must be on level ground, the Floor Lock fully engaged with the floor, and the Lock Handle tightened to prevent deck rotation. Materials are intended to be placed with the center of mass in the center of the deck, directly over the lift column. You must secure any materials to the deck as needed. Always use the proper safety equipment & precautions as required by your materials, working environment, and surroundings.



WARNING: IMPROPER LOADING COULD CAUSE SERIOUS INJURY OR DEATH
WARNING: DO NOT EXCEED LIFT CAPACITY

LIFTING: Plug the female end of a heavy duty extension cord into the receptacle located on the electrical box of the lift table. Plug the male end into a 120V AC outlet. With the Floor Lock fully engaged, push down the Lift Switch with your foot to raise the deck. Holding down the Lift Switch will continuously raise the deck of the lift table until it has reached the raised height of 45" from the top of the deck to the floor. You can stop lifting the deck at any height within its travel range of 18". The hydraulic system has an internal bleeding mechanism that will reduce the chance of internal damage to the lift components if the Lift Switch is continuously pressed after it has reached its maximum stroke, however you should release the Lift Switch within 5 seconds of reaching the table's full stroke. The table will extend slightly beyond the full 45" stroke, and slowly settle to 45" once the over-stroke has bled out.

LOWERING: With the Floor Lock fully engaged, push the Lower Switch with your foot. The deck will lower continuously at a steady, even rate, while the Lower Switch is being depressed, or until the deck reaches the lowered height of 27" from the top of the deck to the floor. Releasing the Lower Switch the deck will stop at any height within its travel range of 18". You can control the down speed with the hand adjustable Flow Control Valve. If the table is loaded with material, it will lower at a faster rate than when it is unloaded.

LOCK HANDLE: The Lock Handle secures the deck rotation when tightened, and allows deck rotation when loosened. The Lock Handle Arm is adjustable by pressing the center button, which disengages the handle from the locking mechanism to allow repositioning. Slight rotational movement of the deck while the Lock Handle is fully engaged is expected. Over tightening the lock handle may damage the Upper Guide Tube Bearing.



NOTICE: DO NOT OVER TIGHTEN THE LOCK HANDLE

DECK ROTATION: Press the center button on the lock handle to adjust the handle position. With the Lock Handle in the desired position, and not interfering with the deck, turn it counter clockwise until it is loose enough to rotate the deck. With the Lock Handle disengaged, the deck can be rotated 360° continuously in either direction. You may lock the deck in place at any height, and in any positioning by adjusting the Lock Handle in the desired position, and turning it clockwise until it is hand tight.



NOTICE: THE LOCK HANDLE ARM MUST BE POSITIONED TOWARDS THE FLOOR TO PREVENT CONTACT WITH THE DECK

FLOOR LOCK: With the Lift Table on level ground, engage the Floor Lock by depressing the locking mechanism with your foot until it locks in place. To disengage the Floor Lock, depress the release mechanism with your foot until the arm snaps up. Floor Locks are not intended to lift or elevate. They are intended to be a supplemental support to reduce unwanted movement, and cannot carry the weight of the entire application. Floor Locks are a brake, not a jack! Excessive force to the Lift Table will still allow it to move.



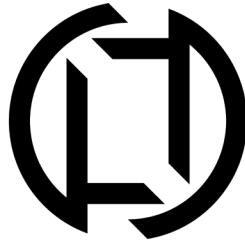
CAUTION: DO NOT ENGAGE OR DISENGAGE THE FLOOR LOCK WITH ANY PART OF YOUR BODY OTHER THAN YOUR FOOT.

MOVEMENT: Each table has a combination of two swivel and two rigid casters that are welded to the base of the table. Materials must be properly secured before moving the table from one location to the next, and should only be loaded to a level that can be safely moved. See the Loading section on this page for more information about load placement. The moving surface must be completely smooth, flat, and free of all debris. All people or personnel must be away from the front of the table while it is being moved. Always use the proper safety equipment & precautions as required by your materials, working environment, and surroundings.

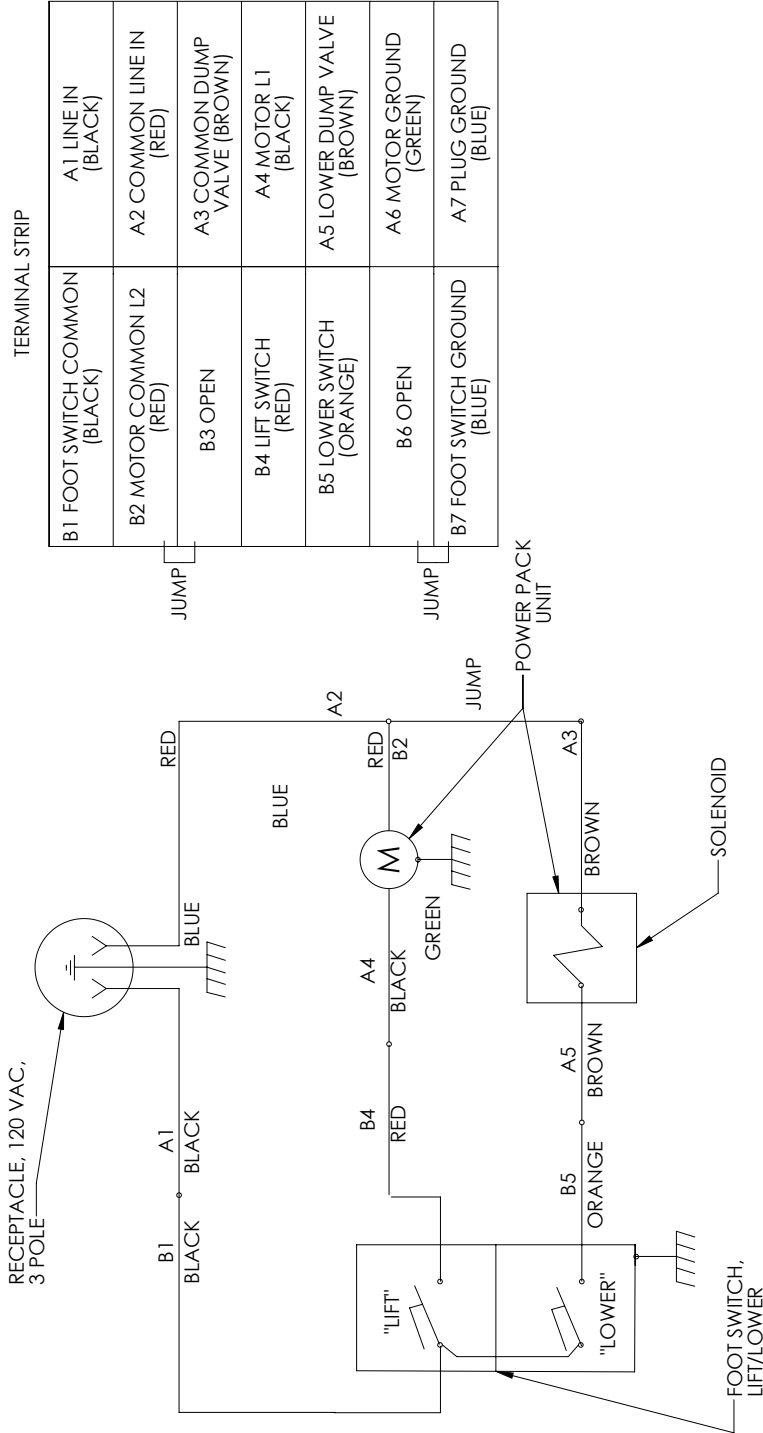


LOCAL: (262) 502-0333 | TOLL FREE: (800) 558-0577 | EMAIL: SALES@LANGELIFT.COM

WWW.LANGELIFT.COM



LANGE LIFT
PRODUCTS THAT LIFT THE WORLD



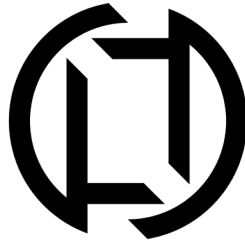
ELECTRIC POWERED LIFT TABLE - CIRCUIT DIAGRAM v1

TERMINAL STRIP

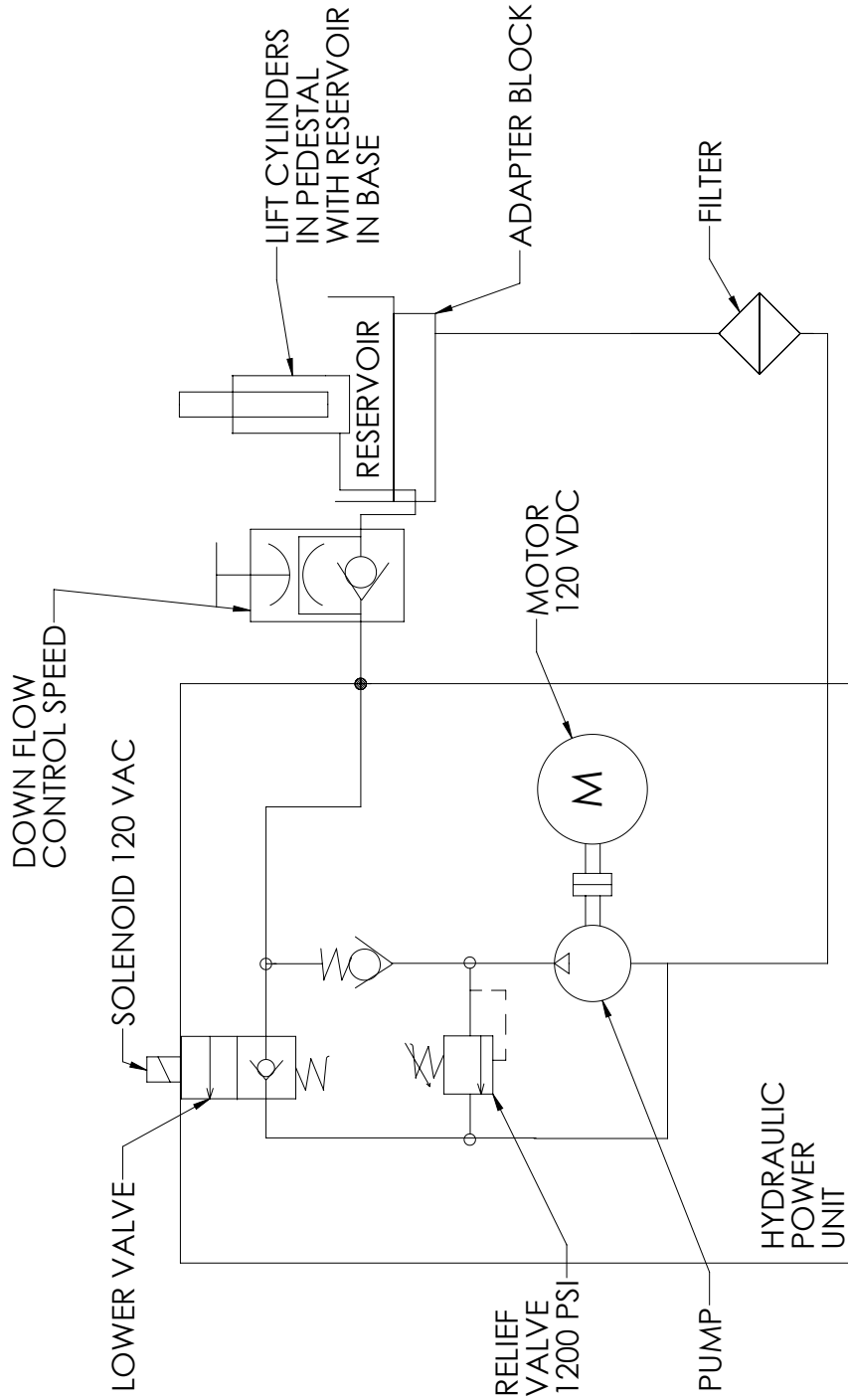
B1 FOOT SWITCH COMMON (BLACK)	A1 LINE IN (BLACK)
B2 MOTOR COMMON L2 (RED)	A2 COMMON LINE IN (RED)
B3 OPEN	A3 COMMON DUMP VALVE (BROWN)
B4 LIFT SWITCH (RED)	A4 MOTOR L1 (BLACK)
B5 LOWER SWITCH (ORANGE)	A5 LOWER DUMP VALVE (BROWN)
B6 OPEN	A6 MOTOR GROUND (GREEN)
B7 FOOT SWITCH GROUND (BLUE)	A7 PLUG GROUND (BLUE)



ELECTRIC LIFT TABLES



LANGE LIFT
PRODUCTS THAT LIFT THE WORLD



ELECTRIC POWERED LIFT TABLE - HYDRAULIC DIAGRAM v1

ELECTRIC LIFT TABLES



LOCAL: (262) 502-0333 | TOLL FREE: (800) 558-0577 | EMAIL: SALES@LANGELIFT.COM

WWW.LANGELIFT.COM

