



LANGE LIFT
PRODUCTS THAT LIFT THE WORLD



PARTS GUIDE





TABLE OF CONTENTS

TABLE OF CONTENTS

FOOT PUMP GUIDE

FOOT PUMP PARTS BREAKDOWN.....	1
FOOT PUMP EXPLODED VIEW.....	2
FOOT PUMP ASSEMBLIES.....	3
FOOT PUMP REBUILD KIT.....	4
FOOT PUMP SEAL KIT.....	5
FOOT PUMP INSTALLATION GUIDE.....	6-9

RAM GUIDE

RAM PARTS BREAKDOWN.....	10
RAM EXPLODED VIEW.....	11
RAM SEAL & BEARING REBUILD KITS.....	12
RAM KIT INSTALLATION GUIDE.....	13

ADDITIONAL PARTS

FLOOR LOCKS.....	14
LOCK HANDLES.....	14
CASTERS.....	15

LANGE LIFT

PRODUCTS THAT LIFT THE WORLD



LOCAL: 1 (262) 502-0333 | TOLL FREE: 1 (800) 558-0577 | EMAIL: SALES@LANGELIFT.COM

WWW.LANGELIFT.COM



FOOT PUMP GUIDE

FOOT PUMP PARTS BREAKDOWN

PARTS ARE NOT SOLD INDIVIDUALLY. ALL PARTS ARE AVAILABLE IN A **REBUILD KIT**, **SEAL KIT**, OR A **COMPLETE FOOT PUMP ASSEMBLY**.

#	PART #	DESCRIPTION	QTY.
1	FP002	PUMP BLOCK	1
2	VARIES*	PUMP LIFT WELDMENT (VARIES*)	1
3	VARIES*	PUMP LOWER WELDMENT (VARIES*)	1
4	FP017	PIVOT TAB	2
5	FP020	LOWER PIVOT	1
6	FP022	O-RING	1
7	FP023	O-RING	4
8	FP024	O-RING	1
9	FP025	O-RING	1
10	FP026	SEALING WASHER	1
11	FP027	BALL	1
12	FP028	BALL	2
13	FP029	BALL	1
14	FP030	SPRING	1
15	FP031	SPRING	1
16	FP032	SPRING	1
17	FP033	SPRING PLUG	1
18	FP034	VENT PLUG	1
19	FP035	INLET PLUG	1
20	FP036	OUTLET PLUG	1
21	FP037	INLET SCREEN	1
22	FP038	OUTLET SCREEN	1
23	FP039	PISTON	1
24	FP040	SLUG	1
25	FP041	LOWER PIN	1
26	FP042	CLEVIS	2
27	FP043	COTTER PIN	2
28	FP044-A	SPRING PIN	1
29	FP045	ROLLER	1
30	FP046	SET SCREW	1
31	FP047	HEX NUT	1
32	FP048	BOLT	2

*THESE PARTS VARY IN LENGTH, DEPENDING ON THE PHYSICAL DIMENSIONS OF THE **LANGE LIFT TABLE** YOU OWN AND ARE ONLY AVAILABLE BY PURCHASING A **COMPLETE FOOT PUMP ASSEMBLY**. SEE PAGE 3.

REFER TO FOOT **PUMP EXPLODED VIEW** ON PAGE 2 FOR PARTS LOCATIONS

LANGE LIFT
PRODUCTS THAT LIFT THE WORLD



LOCAL: 1 (262) 502-0333 | TOLL FREE: 1 (800) 558-0577 | EMAIL: SALES@LANGELIFT.COM

WWW.LANGELIFT.COM

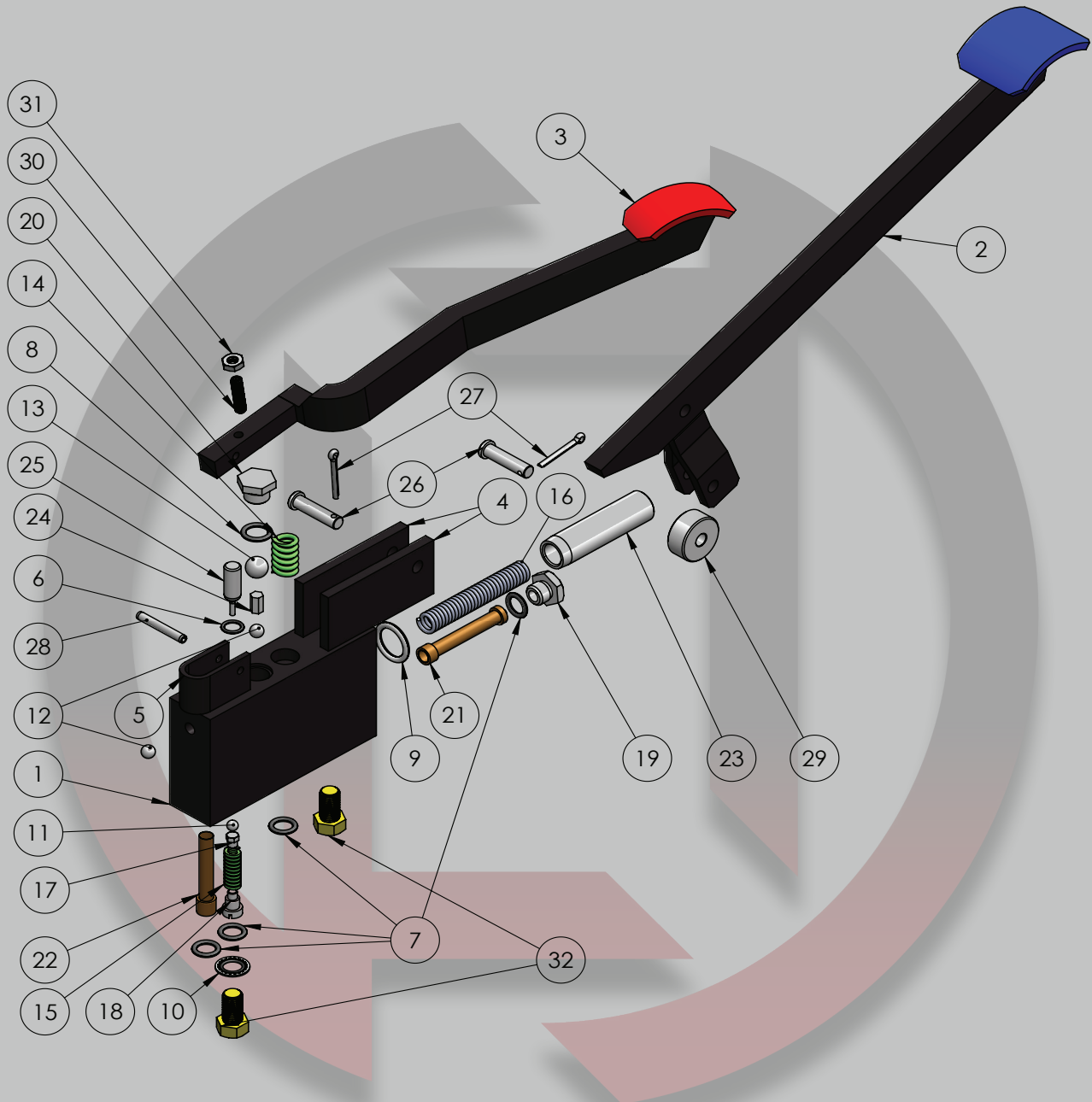
FOOT PUMP GUIDE



FOOT PUMP GUIDE

FOOT PUMP EXPLODED VIEW

FOOT PUMP GUIDE



PART #2 & #3 WILL VARY, DEPENDING ON THE DECK SIZE OF YOUR
LANGE LIFT TABLE

2

LANGE LIFT
PRODUCTS THAT LIFT THE WORLD



LOCAL: 1 (262) 502-0333 | TOLL FREE: 1 (800) 558-0577 | EMAIL: SALES@LANGELIFT.COM

WWW.LANGELIFT.COM



FOOT PUMP GUIDE

FOOT PUMP GUIDE

FOOT PUMP ASSEMBLIES

COMPLETE FOOT PUMP ASSEMBLIES ARE AVAILABLE TO PURCHASE IF THERE IS PHYSICAL DAMAGE TO THE PUMP BLOCK AND/OR THE LIFTING AND LOWERING ARM WELDMENTS.

PLEASE REFER TO PAGES 6-9, TO VIEW AN INSTALLATION GUIDE FOR THE BELOW PARTS.

PART #FPA24

COMPLETE FOOT PUMP REPLACEMENT ASSEMBLY
24" X 24" SQUARE DECK MANUAL LIFT TABLES*

*ALSO COMPATIBLE WITH LANGE LIFT MODEL
L-124-30RD AND **L-224-30RD** - 30" Ø ROUND DECK
MANUAL LIFT TABLES



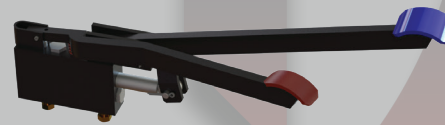
PART #FPA30

COMPLETE FOOT PUMP REPLACEMENT ASSEMBLY
30" X 30" SQUARE DECK MANUAL LIFT TABLES



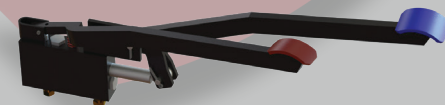
PART #FPA36

COMPLETE FOOT PUMP REPLACEMENT ASSEMBLY
36" X 36" SQUARE DECK MANUAL LIFT TABLES



PART #FPA48

COMPLETE FOOT PUMP REPLACEMENT ASSEMBLY
48" X 48" SQUARE DECK MANUAL LIFT TABLES





FOOT PUMP GUIDE

FOOT PUMP REBUILD KIT

LANGE LIFT PART NUMBER: **FPRK**

DESCRIPTION: **FOOT PUMP REBUILD KIT**

FOOT PUMP GUIDE

FPRK

PARTS BREAKDOWN

#	PART #	DESCRIPTION	QTY.
6	FP022	O-RING	1
7	FP023	O-RING	4
8	FP024	O-RING	1
9	FP025	O-RING	1
10	FP026	SEALING WASHER	1
11	FP027	BALL	1
12	FP028	BALL	1
13	FP029	BALL	1
14	FP030	SPRING	1
15	FP031	SPRING	1
16	FP032	SPRING	1
17	FP033	SPRING PLUG	1
18	FP034	VENT PLUG	1
21	FP037	INLET SCREEN	1
22	FP038	OUTLET SCREEN	1
23	FP039	PISTON	1
24	FP040	SLUG	1
25	FP041	LOWER PIN	1
26	FP042	CLEVIS	2
27	FP023	COTTER PIN	2
28	FP044-A	SPRING PIN	1



FOOT PUMP REBUILD KITS ARE UNIVERSAL FOR ALL STANDARD LANGE LIFT MANUAL LIFT TABLES, REGARDLESS OF TABLE SIZE OR CAPACITY.

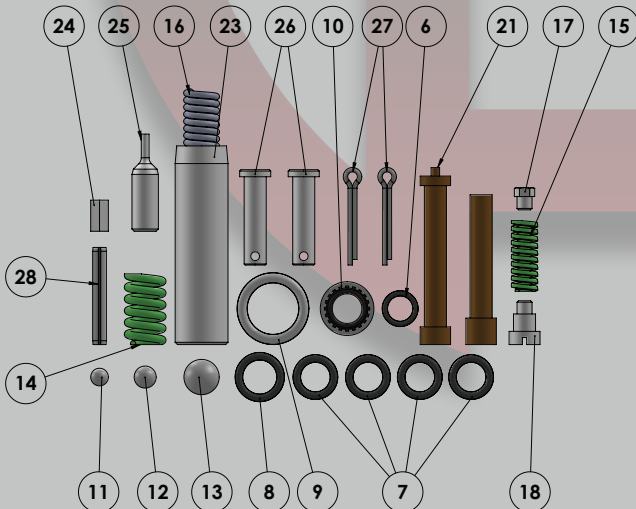
PARTS ARE ONLY SOLD AS A KIT, PART NUMBER **FPRK**.

WE RECOMMEND THIS KIT TO FULLY REBUILD INTERNAL COMPONENTS OF THE FOOT PUMP. THIS INCLUDES THE BALL BEARINGS, SPRINGS, SCREENS, SEALS, AND MORE.

UNLESS THERE IS PHYSICAL DAMAGE TO THE FOOT PUMP BODY, INCLUDING THE LIFTING AND LOWERING ARM WELDMENTS, THIS KIT WILL GET YOUR TABLE BACK UP AND RUNNING.

PLEASE REFER TO PAGE 2 OF THIS GUIDE FOR AN EXPLODED VIEW OF THE FOOT PUMP, WHICH REFERENCES THE LOCATIONS OF ALL OF THE PARTS IN THE LIST AND IMAGES TO THE LEFT OF THIS PAGE.

PLEASE REFER TO PAGES 6-9 OF THIS GUIDE, TO VIEW AN INSTALLATION GUIDE FOR THE ADJACENT PARTS.





FOOT PUMP SEAL KIT

LANGE LIFT PART NUMBER: **FPSK**
DESCRIPTION: **FOOT PUMP SEAL KIT**

FPSK

PARTS BREAKDOWN

#	PART #	DESCRIPTION	QTY.
6	FP022	O-RING	1
7	FP023	O-RING	4
8	FP024	O-RING	1
9	FP025	O-RING	1
10	FP026	SEALING WASHER	1
11	FP027	BALL	1
12	FP028	BALL	1
13	FP029	BALL	1



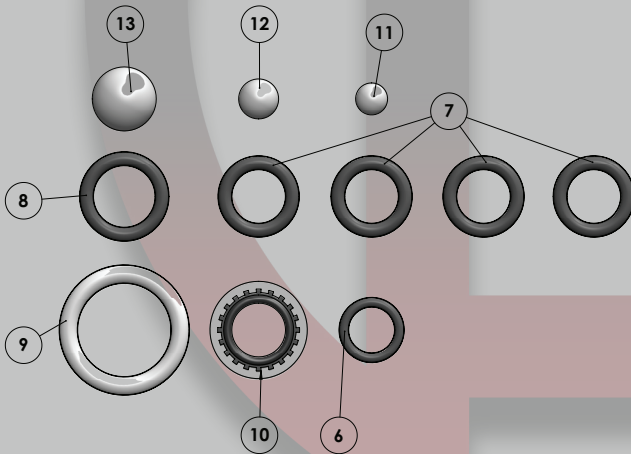
FOOT PUMP SEAL KITS ARE UNIVERSAL FOR ALL STANDARD LANGE LIFT MANUAL LIFT TABLES, REGARDLESS OF TABLE SIZE OR CAPACITY.

PARTS ARE ONLY SOLD AS A KIT, PART NUMBER **FPSK**.

UNLESS YOU ARE SURE THAT ONLY THE SEALS ARE WORN OUT ON YOUR TABLE, WE HIGHLY RECOMMEND PURCHASING OUR FOOT PUMP REBUILD KIT, PART NUMBER **FPRK**, THE **FPRK** INCLUDES THE BALL BEARINGS, SPRINGS, SCREENS, SEALS, AND MORE.

PLEASE REFER TO PAGE 2 OF THIS GUIDE FOR AN EXPLODED VIEW OF THE FOOT PUMP, WHICH REFERENCES THE LOCATIONS OF ALL OF THE PARTS IN THE LIST AND IMAGES TO THE LEFT OF THIS PAGE.

PLEASE REFER TO PAGES 6-9 OF THIS GUIDE, TO VIEW AN INSTALLATION GUIDE FOR THE ADJACENT PARTS.





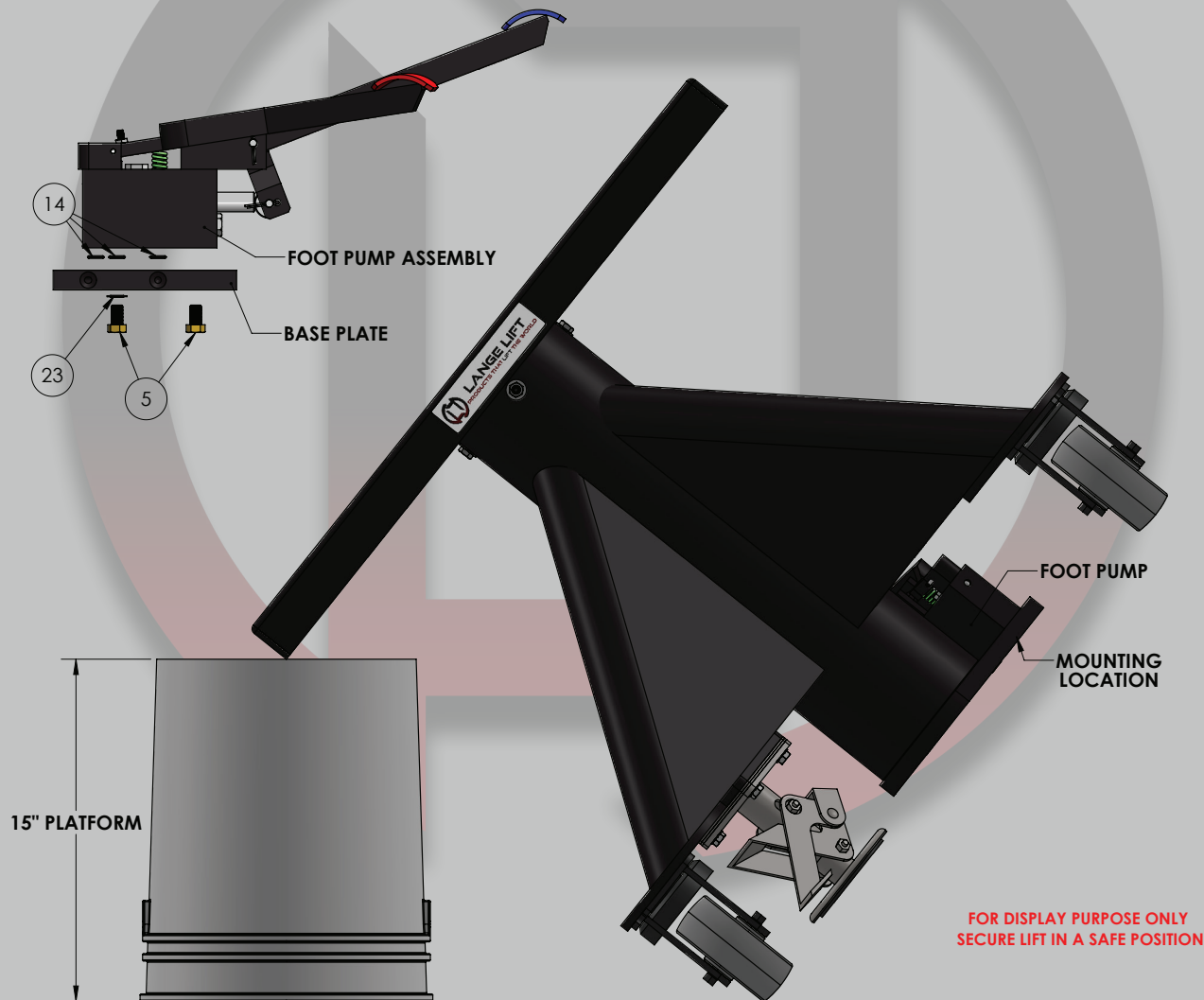
FOOT PUMP INSTALLATION GUIDE

FOOT PUMP REMOVAL

COMPLETELY LOWER THE TABLE BY PRESSING DOWN ON THE PUMP LOWER WELDMENT (3) OF THE FOOT PUMP. USE A FORKLIFT TO SAFELY LIFT THE TABLE UP FROM THE LEGS, MAKING SURE TO CLEAR ANY COMPONENTS, SUCH AS THE CASTERS, FLOOR LOCK, AND THE FOOT PUMP ITSELF, SO THAT YOU CAN ACCESS THE BASE PLATE ON THE BOTTOM OF THE TABLE.

IF YOU DO NOT HAVE ACCESS TO A FORKLIFT, SAFELY LEAN THE LOWERED TABLE ONTO A STABLE PLATFORM UNTIL THE BULK OF THE TABLE'S WEIGHT IS EVENLY DISTRIBUTED AGAINST IT AND FULLY SECURE, AS ILLUSTRATED BELOW. YOU MAY USE AN OVERHEAD CRANE FOR ADDITIONAL SUPPORT OF THE TABLE, HOWEVER DO NOT LIFT THE TABLE OFF OF THE GROUND BY THE DECK OR YOU MAY DAMAGE THE GUIDE TUBE AND GUIDE TUBE BEARINGS.

ONCE THE TABLE IS SAFELY SECURED, CHOCK THE WHEELS SO THAT THE TABLE CANNOT MOVE. WHILE HOLDING THE EXISTING FOOT PUMP IN PLACE, LOOSEN AND REMOVE THE TWO PUMP BOLTS (5) USING A 3/4" SOCKET WRENCH. REFERENCE THE IMAGE BELOW.





FOOT PUMP INSTALLATION GUIDE

FOOT PUMP DISASSEMBLY

IF YOU ARE REPLACING THE ASSEMBLY, SKIP TO PAGE 9. WHEN REMOVING O-RINGS, IT IS RECOMMENDED THAT A SEAL PICK BE USED TO PREVENT DAMAGE TO THE COMPONENTS.

CLAMP THE BLOCK (1) IN A VICE, SECURING IT WITH THE PEDALS UPRIGHT. LOOSEN THE NUT (32) AND SET SCREW (30) OF THE LOWER WELDMENT (3) ABOUT 3 TO 4 TURNS. REMOVE THE SPRING PIN (28), SPRING (14), AND LOWER WELDMENT. REMOVE THE LOWER PIN (11) (MAY REQUIRE A NEEDLE NOSE PLIERS TO REACH) AND THE O-RING (17) FROM THE LOWER PIN'S CAVITY.

TO REMOVE THE LIFT WELDMENT (2), TAKE THE FOLLOWING STEPS. **CAUTION!** THE SPRING (16) ON THE LIFT WELDMENT HAS PRESSURE FROM THE PISTON (23). TO PREVENT MOVEMENT OF THE PISTON AND THE LIFT WELDMENT, CAREFULLY REMOVE THE CLEVIS (26) BY FIRMLY HOLDING THE PISTON. REMOVE THE COTTER PIN (27) FROM THE CLEVIS AND THEN REMOVE THE CLEVIS FROM THE PUMP LIFT WELDMENT, ALLOWING THE SPRING (16) TO RELAX. REMOVE COTTER PIN AND CLEVIS FROM THE LIFT WELDMENT AND ROLLER (29).

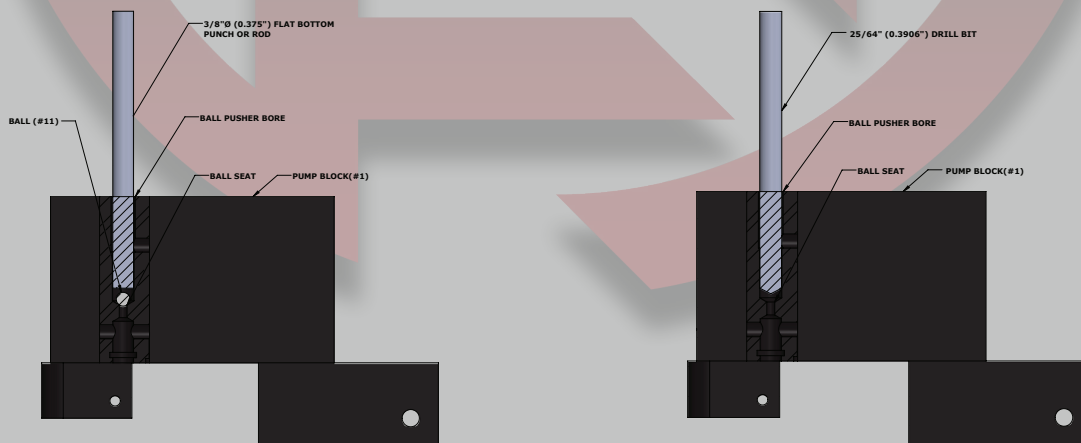
REMOVE THE FOLLOWING PARTS FROM THE BLOCK: PISTON, SPRING (16), AND O-RING (7). REMOVE THE INLET PLUG (19), O-RING (7), AND INLET SCREEN (21) FROM THE PUMP PISTON CAVITY. REMOVE THE OUTLET PLUG (20) AND O-RING (8). REMOVE THE BLOCK FROM THE VICE AND TURN IT UPSIDE DOWN TO REMOVE BALL (13), SLUG (24), AND BALL (12) FROM THE OUTLET CHECK BORE.

CLAMP THE BLOCK BACK IN THE VICE, SECURING IT WITH THE MOUNTING SURFACE UPRIGHT. FROM THE BLOCK, REMOVE THE OUTLET SCREEN (22) USING AN EASY-OUT OR TAP TO ENGAGE THE SCREEN TO HELP EXTRACT IT. UNSCREW AND REMOVE THE VENT PLUG (18), SPRING (15) AND SPRING PLUG (17). RELEASE THE BLOCK AND TURN IT UPSIDE DOWN SO THAT THE BALL (11) DROPS OUT.

FOOT PUMP CLEANING & INSPECTION

THOROUGHLY CLEAN THE BLOCK (1) AND PASSAGES USING A PARTS WASHER. PASSAGES SHOULD BE CLEAN, FREE OF DEBRIS AND SOLVENT.

INSPECT THE BALL PUSHER BORE WITH A FLASHLIGHT AND ENSURE THAT THE BALL SEAT IS CLEAR AND FREE OF NICKS OR SCRATCHES. IF THE LOWER PIN (25) WAS BROKEN OR BENT, IT IS IMPORTANT TO INSPECT THE BALL SEAT FOR ANY DAMAGE AND THAT ALL OF THE DEBRIS HAS BEEN REMOVED. IF ANY DAMAGE IS OBSERVED ON THE BALL SEAT YOU CAN CLEAN IT UP USING A 25/64" DRILL BIT, TAKING OFF NO MORE THAN 1/32" (0.032") OF MATERIAL. PLACE THE BALL (11) INTO THE BALL PUSHER CAVITY. USING A 3/8" Ø STEEL ROD PLACED UP AGAINST THE BALL (11) ALREADY RESTING IN THE BALL SEAT, FIRMLY TAP THE ROD WITH A HAMMER TO SEAT THE STEEL BALL. IF THE BALL SEAT REQUIRED REPAIR, THOROUGHLY RE-CLEAN THE PUMP BODY AND PASSAGES.





FOOT PUMP INSTALLATION GUIDE

FOOT PUMP ASSEMBLY

REPLACE THE FOLLOWING PARTS WITH BASED ON THE TYPE OF KIT YOU PURCHASED.

CHECK THE FIT OF THE LOWER PIN (25) AND PISTON (23) BY PLACING THEM IN THEIR RESPECTIVE BORES AND VERIFY THAT THEY EASILY MOVE WITHIN THE BORE. IF THEY DO NOT, INSPECT THE BORES FOR BURRS OR DEBRIS. REMOVE ANY OBSTRUCTIONS AND CHECK THE FIT AND MOVEMENT AGAIN. IT IS RECOMMENDED THAT THE ENTIRE FOOT PUMP ASSEMBLY BE REPLACED IF THEY ARE DAMAGED.

CLAMP THE BLOCK (1) IN A VICE, SECURING IT WITH THE MOUNTING SURFACE UPRIGHT AND INSTALL THE FOLLOWING PARTS:

OUTLET SCREEN (22) - PLACE INTO THE OUTLET CAVITY AND GENTLY TAP THE SCREEN INTO THE HOLE UNTIL IT IS FLUSH WITH THE MOUNTING FACE OF THE PUMP BODY.

BALL (11) - DROP INTO THE BALL PUSHER BORE. ASSEMBLE THE SPRING PLUG (17), SPRING (15), AND VENT PLUG (18). WITH THE THREE PARTS TOGETHER, SCREW THE VENT PLUG INTO THE BALL PUSHER BORE UNTIL SNUG. BEING CAREFUL NOT TO OVER TIGHTEN. THEN, UNSCREW 3/4THS OF A TURN.

INLET SCREEN (21) - THE SCREEN COLLAR MUST FIT PAST THE SUCTION POINT.

O-RING (7) - PLACE ONTO THE INLET PLUG (19) AND SCREW IT INTO THE BLOCK (1). O-RING (9) - PLACE INTO THE GROVE IN THE BLOCK (1), BEING SURE THAT THE O-RING (9) IS PROPERLY SEATED AND NOT TWISTED.

REMOVE THE BLOCK (1) FROM THE VICE AND TURN IT AROUND, SECURING IT WITH THE PEDALS FACING UPRIGHT. LOWER PIN (25) - APPLY A LIGHT COATING OF GREASE OR OIL ON IT, PLACE IT IN THE CAVITY, AND PRESS DOWN FIRMLY ON THE LOWER PIN (25) UNTIL IT STOPS.

BALL (12), SLUG (24), AND BALL (13) - PLACE INTO THE OUTLET CHECK PASSAGE IN THIS ORDER. O-RING (9) - INSTALL INTO THE BLOCK (1) ALONG WITH THE OUTLET PLUG (19), ROLLER (29), CLEVIS (26), AND COTTER PIN (27) - SECURE ALL THREE TO THE LIFT WELDMENT (2).

PISTON (23) - APPLY A LIGHT COATING OF GREASE OR OIL IN THE CAVITY OF THE PISTON (23) AND INSERT THE SPRING (16). ONCE TOGETHER, INSERT THEM INTO THE BLOCK (#1) UNTIL APPROXIMATELY 2.00" OF THE PISTON (23) IS STICKING OUT. APPLY SIDE PRESSURE TO THE PISTON (23) TO HOLD IT IN PLACE.

FASTEN THE LIFT PEDAL (2) TO THE BLOCK (1) WITH A CLEVIS (26) AND A COTTER PIN (27). PUMP THE LIFT WELDMENT (2) BY HAND TO BE SURE OF PROPER FUNCTIONALITY. THE LIFT WELDMENT (2) SHOULD RETURN THE NORMAL OPERATING POSITION WITH THE PRESSURE CAUSED BY THE SPRING (16) THAT WAS INSERTED INTO THE PISTON (23).

START THE SPRING PIN (28) INTO THE BLOCK (1). BACK OFF THE SET SCREW (30) AND NUT (31) FROM THE LOWER WELDMENT (3) UNTIL IT IS FLUSH. INSTALL THE LOWER WELDMENT (3) ON THE BLOCK (1) AND DRIVE IN THE SPRING PIN (28).

ADJUST THE SET SCREW (30) BY BACKING UP THE NUT (31) TO THE END OF THE SET SCREW (30). TURN THE SET SCREW (30) INTO THE LOWER WELDMENT (3) UNTIL IT TOUCHES THE LOWER PIN (25). FULLY DEPRESS THE LOWER WELDMENT (3) BY HAND. BACK THE SET SCREW (30) OFF TWO FULL TURNS AND RE-TIGHTEN IT UNTIL IT TOUCHES THE LOWER PIN (25). UNSCREW THE SET SCREW (30) SLIGHTLY. HOLD THE SET SCREW (30) IN POSITION WITH A HEX KEY AND TIGHTEN THE NUT (31). DO NOT CHANGE THE POSITION OF THE SET SCREW (30). CHECK FOR PROPER ADJUSTMENT. THE SET SCREW (30) SHOULD NOT BE TOUCHING THE LOWER PIN (25) IN IT'S NORMAL POSITION. WHEN THE LOWER WELDMENT (3) IS DEPRESSED, THE LOWER PIN (25) SHOULD MOVE INTO THE BLOCK (1).

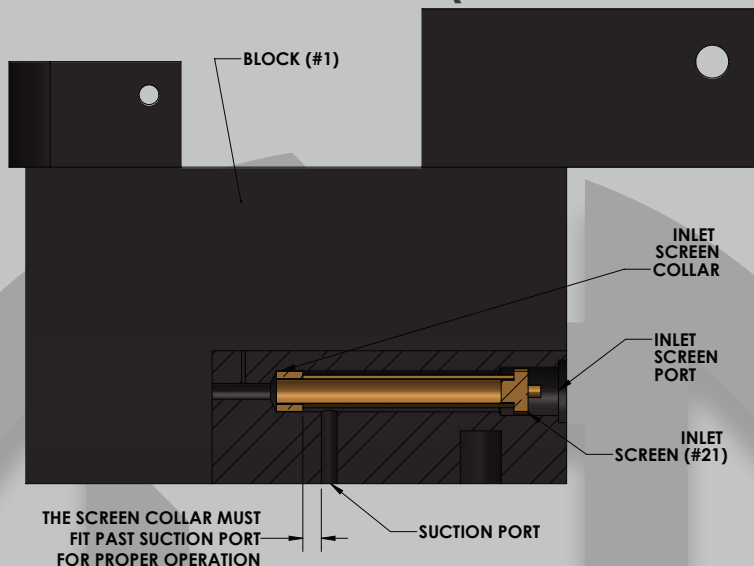


FOOT PUMP GUIDE

FOOT PUMP GUIDE

FOOT PUMP INSTALLATION GUIDE

FOOT PUMP ASSEMBLY (CONTINUED)



FOOT PUMP INSTALLATION

THOROUGHLY CLEAN THE FOOT PUMP'S MOUNTING SURFACE (BASE PLATE) SO IT IS FREE OF CONTAMINANTS. PLACE THE O-RING SEALS IN THE SPOT FACED HOLES ON THE BOTTOM OF THE BASE PLATE. POSITION THE FOOT PUMP ASSEMBLY OVER THE HOLES AND INSTALL THE SEAL, MOUNTING BOLTS AND TIGHTEN UNTIL SNUG. DO NOT OVER TIGHTEN. SAFELY TILT THE TABLE BACK TO IT'S NORMAL OPERATING POSITION, WITH THE CASTERS MAKING FULL CONTACT WITH THE FLOOR.

IT MAY BE NECESSARY TO PRIME THE NEW OR REBUILT FOOT PUMP ASSEMBLY. TO DO THIS, PRESS THE LOWER PEDAL WITH YOUR FOOT UNTIL THE LIFT IS AT IT'S FULLY LOWERED HEIGHT AND RELEASE. USING AN OVERHEAD CRANE OR FORKLIFT, SAFELY AND SLOWLY RAISE THE DECK OF THE TABLE APPROXIMATELY 3"-4" WITHOUT LIFTING THE TABLE OFF THE GROUND. **WARNING! LIFTING THE TABLE OFF THE GROUND BY THE DECK MAY DAMAGE INTERNAL COMPONENTS!** ONCE RAISED, THIS SHOULD CAUSE HYDRAULIC OIL TO BE DRAWN INTO THE FOOT PUMP. PUMP THE LIFT PEDAL, AND BEGIN TO RAISE THE LIFT TO IT'S FULL RAISED HEIGHT. GIVE AN ADDITIONAL TEN PUMPS OF THE LIFT PEDAL ONCE IT HAS REACHED MAXIMUM HEIGHT TO BLEED ANY AIR OUT OF THE SYSTEM.





RAM PARTS BREAKDOWN

#	PART #	DESCRIPTION	QTY.
1	VARIES*	RAM (VARIES*)	1
2	VARIES*	TOP RAM BEARING (VARIES*)	1
3	VARIES*	MIDDLE RAM BEARING (VARIES*)	1
4	VARIES*	BOTTOM RAM BEARING (VARIES*)	1
5	VARIES*	RAM SPRING PIN (VARIES*)	2
6	VARIES*	RAM O-RING (VARIES*)	1
7	VARIES*	RAM WIPER (VARIES*)	1
8	VARIES*	RAM SNAP RING (VARIES*)	1
9	AC050	LOCK HANDLE BEARING	1
10	AC051	BASE SET SCREW	3
11	AC052	BASE JAM NUT	3
12	AC053	BASE LOCK WASHER	3
13	AC054	RAM HOLD PIN	1
14	AC055	LOCK HANDLE	1
15	VARIES*	SUB PLATE (VARIES*)	1
16	D041	DECK GUIDE TUBE	1
18	D043	DECK UPPER GUIDE TUBE BEARING	1
19	D044	DECK LOWER GUIDE TUBE BEARING	1
20	D046	DECK SPRING PIN	3
21	D047	DECK POP RIVET	5
22	P001	PEDESTAL PLATE	1
23	VARIES*	CYLINDER (VARIES*)	1
24	P014	PEDESTAL TUBE NUT	1

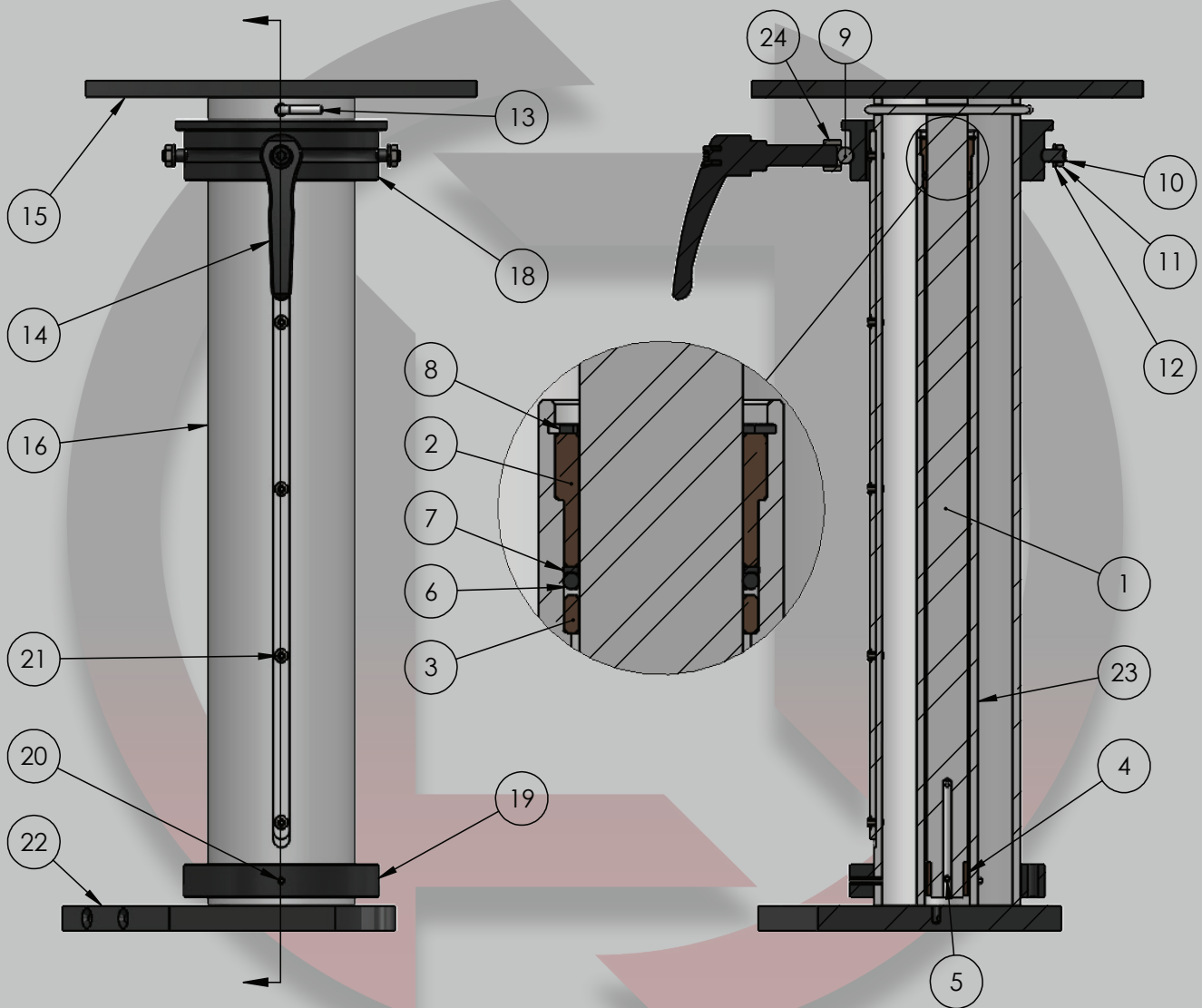
THE NON-HIGHLIGHTED PARTS ARE AVAILABLE IN KITS ONLY. SEE PAGE 12 FOR **THE RAM SEAL & BEARING REBUILD KITS**. THE PARTS HIGHLIGHTED ABOVE ARE NOT GENERALLY AVAILABLE, AND ARE SHOWN FOR REFERENCE ONLY. IF YOU NEED ANY OF THESE PARTS, PLEASE CONTACT US.

*THESE PARTS VARY IN SIZE/TYPE, DEPENDING ON THE CAPACITY OF THE LANGE LIFT MODEL TABLE YOU OWN.

REFER TO THE **RAM CROSS SECTION VIEW** ON PAGE 11 FOR PARTS LOCATIONS



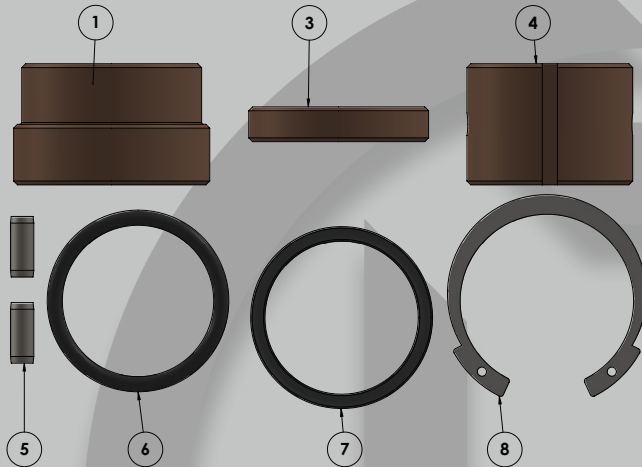
RAM CROSS SECTION VIEW





RAM SEAL & BEARING REBUILD KIT

PART #	DESCRIPTION
P1RK	RAM SEAL & BEARING REBUILD KIT - 1,000 LB. CAPACITY TABLES
P2RK	RAM SEAL & BEARING REBUILD KIT - 2,000 LB. CAPACITY TABLES
P3RK	RAM SEAL & BEARING REBUILD KIT - 3,000 LB. CAPACITY TABLES
P4RK	RAM SEAL & BEARING REBUILD KIT - 4,000 LB. CAPACITY TABLES
P5RK	RAM SEAL & BEARING REBUILD KIT - 5,000 LB. CAPACITY TABLES

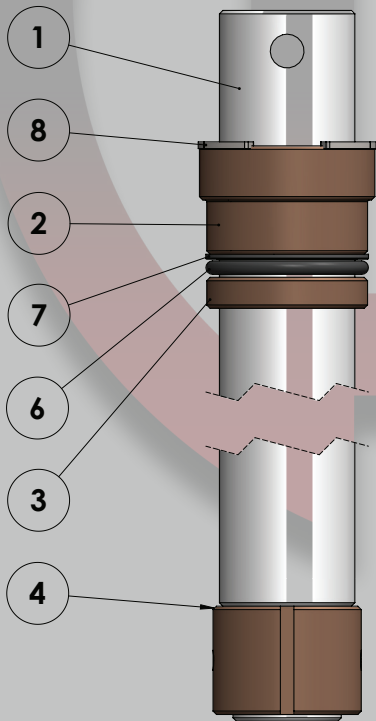


RAM SEAL & BEARING REBUILD KITS ARE AVAILABLE TO REPLACE THE SEALS AND BEARINGS ON THE RAM, WHICH INTERFACE WITH THE CYLINDER.

PARTS ARE ONLY SOLD AS A KIT, WHICH ARE LISTED ABOVE, DEPENDING ON THE CAPACITY OF YOUR **LANGE LIFT** TABLE.

PLEASE REFER TO PAGE 11 OF THIS GUIDE FOR A CROSS SECTION VIEW OF THE RAM AREA OF THE TABLE, WHICH REFERENCES THE LOCATIONS OF ALL OF THE PARTS IN THE KITS AND IMAGES TO THE LEFT OF THIS PAGE.

PLEASE REFER TO PAGE 13 OF THIS GUIDE, TO VIEW AN INSTALLATION GUIDE FOR THE ADJACENT PARTS.



LANGE LIFT

PRODUCTS THAT LIFT THE WORLD





RAM KIT INSTALLATION GUIDE

ORIGINAL RAM PART REMOVAL

STRAIGHTEN AND REMOVE THE HOLD PIN (13). REMOVE THE LOCK HANDLE (14), AND THE LOCK HANDLE BEARING (9). LOOSEN THE SET SCREWS (10), JAM NUTS (11), AND LOCK WASHERS (12) IN THREE PLACES AROUND THE GUIDE TUBE (16).

ONCE THE ABOVE PARTS HAVE BEEN REMOVED AND LOOSENED, AS INSTRUCTED, BE SURE TO PLACE A BUCKET SUITABLE FOR HYDRAULIC OIL NEARBY, AND INDUSTRIAL RAGS THAT CAN SAFELY BE USED TO CLEAN UP ANY EXCESS HYDRAULIC OIL.

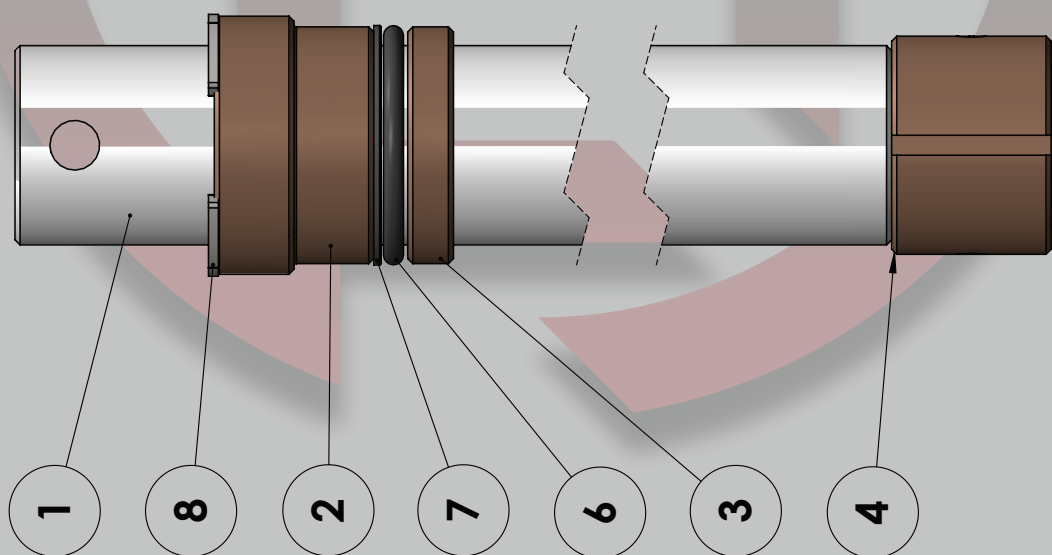
USING AN OVERHEAD CRANE OR A FORKLIFT, SAFELY AND SLOWLY LIFT UP THE DECK. ALLOW ANY EXCESS HYDRAULIC OIL TO DRAIN BACK INTO THE BASE OF THE LIFT. ONCE DRAINED, COMPLETELY REMOVE THE DECK PORTION OF THE LIFT TABLE FROM THE BASE, MAKING SURE TO PROTECT THE LOWER GUIDE TUBE BEARING (19). THE RAM (1) AREA IS NOW ACCESSIBLE.

REMOVE THE SNAP RING (8) WITH A SNAP RING PLIERS. LIFT AND REMOVE THE RAM (1) FROM THE CYLINDER (23). REMOVE THE TOP RAM BEARING (2), O-RING (6), WIPER (7), AND MIDDLE RAM BEARING (3).

NEW RAM PART INSTALLATION

USING YOUR NEW PARTS, FOLLOW THE ABOVE STEPS IN REVERSE. IF THE BOTTOM RAM BEARING (4) NEEDS TO BE REPLACED, YOU WILL NEED TO DRILL A HOLE NEAR THE MIDPOINT (1/2") OF THIS PART, AND THROUGH THE EXISTING SPRING PIN HOLE ON THE RAM (1) USING A 3/16" DRILL BIT. CLEAR THE AREA OF METAL DEBRIS AND INSERT A SPRING PIN (5) ON EACH SIDE THROUGH THE BOTTOM RAM BEARING (4) AND RAM (1) TO SECURE THE BOTTOM RAM BEARING (4) TO THE RAM (1).

DO NOT OVER TIGHTEN THE SET SCREWS (10) OR JAM NUTS (11). THE UPPER GUIDE TUBE BEARING (18) SHOULD ROTATE WITHIN THE GUIDE TUBE (16). ALIGN THE HOLES IN THE RAM (1) AND REINSERT THE HOLD PIN (13) AND BEND EACH SIDE IN THE OPPOSITE DIRECTION OF THE OTHER. OPERATE THE LIFT NORMALLY TO CHECK FOR PROPER REASSEMBLY.





ADDITIONAL PARTS

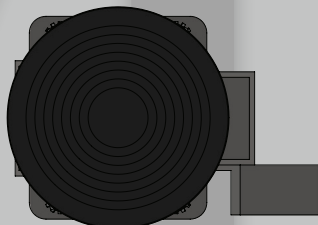
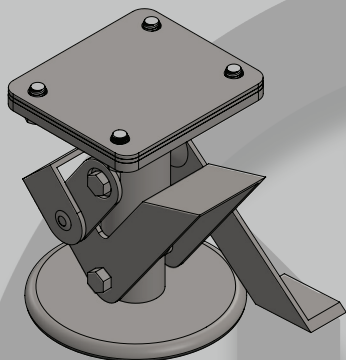
ADDITIONAL PARTS

FLOOR LOCK ASSEMBLIES

PART NUMBER FLA01

FLOOR LOCK ASSEMBLY - 24" TO 36" LIFT TABLES.

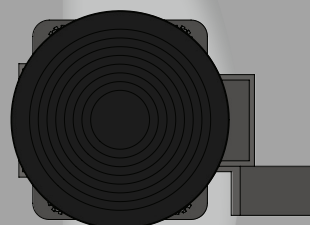
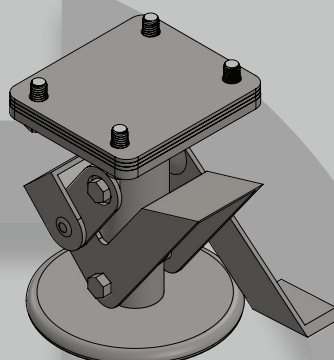
REPLACEMENT FLOOR LOCK ASSEMBLY INCLUDES A FLOOR LOCK, SHIMS, BOLTS, AND LOCK WASHERS.



PART NUMBER FLA02

FLOOR LOCK ASSEMBLY - 48" LIFT TABLES.

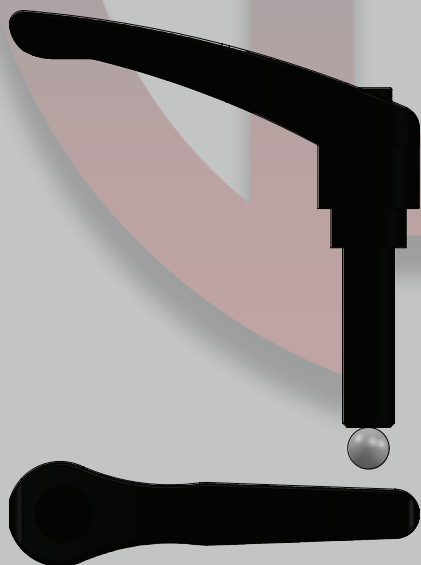
REPLACEMENT FLOOR LOCK ASSEMBLY INCLUDES A FLOOR LOCK, SHIMS, BOLTS, AND LOCK WASHERS.



LOCK HANDLE ASSEMBLIES

PART NUMBER LHA01

LOCK HANDLE ASSEMBLY - 24" TO 36" LIFT TABLES



PART NUMBER AC130

EXTENDED LOCK HANDLE ASSEMBLY - 48" LIFT TABLES

LANGE LIFT

PRODUCTS THAT LIFT THE WORLD





ADDITIONAL PARTS

HEAVY DUTY CASTERS

PART NUMBER ACO02

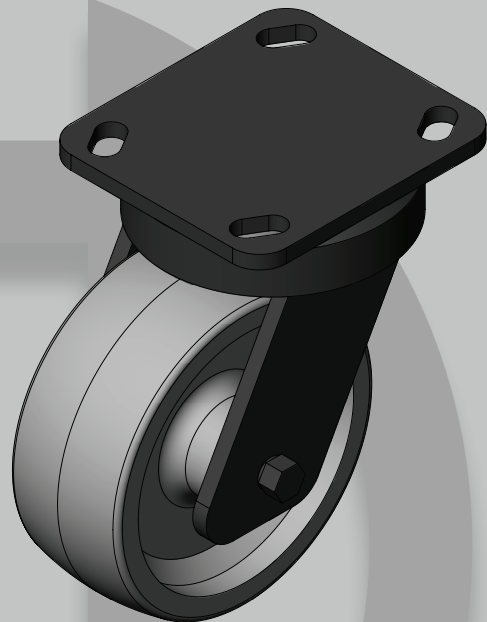
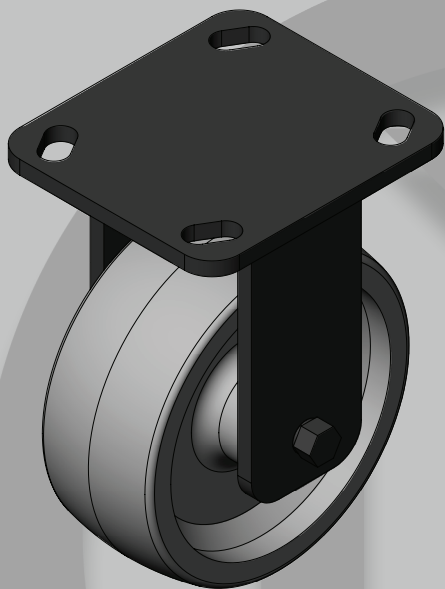
5" X 2" HEAVY DUTY CAST IRON RIGID CASTER - TRIMMED/WELD ON

GRINDING OLD CASTERS OFF AND WELDING THE NEW CASTERS ON IS REQUIRED FOR INSTALLATION.

PART NUMBER ACO03

5" X 2" HEAVY DUTY CAST IRON SWIVEL CASTER - TRIMMED/WELD ON

GRINDING OLD CASTERS OFF AND WELDING THE NEW CASTERS ON IS REQUIRED FOR INSTALLATION.



ADDITIONAL PARTS

15

LANGE LIFT
PRODUCTS THAT LIFT THE WORLD



LOCAL: 1 (262) 502-0333 | TOLL FREE: 1 (800) 558-0577 | EMAIL: SALES@LANGELIFT.COM

WWW.LANGELIFT.COM

